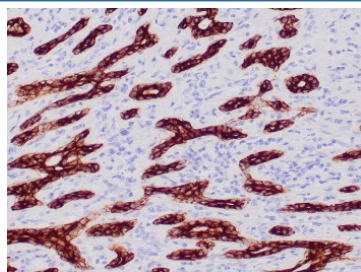


## Cytokeratin CAM5.2 Antibody / Cytokeratin 7/8 [clone CAM5.2] (V5837)

Catalog No.	Formulation	Size
V5837-100UG	0.2 mg/ml in 1X PBS with 0.1 mg/ml BSA (US sourced), 0.05% sodium azide	100 ug
V5837-20UG	0.2 mg/ml in 1X PBS with 0.1 mg/ml BSA (US sourced), 0.05% sodium azide	20 ug
V5837SAF-100UG	1 mg/ml in 1X PBS; BSA free, sodium azide free	100 ug

[Bulk quote request](#)

<b>Availability</b>	1-3 business days
<b>Species Reactivity</b>	Human
<b>Format</b>	Purified
<b>Clonality</b>	Monoclonal (mouse origin)
<b>Isotype</b>	Mouse IgG2a, kappa
<b>Clone Name</b>	CAM5.2
<b>Purity</b>	Protein G affinity
<b>Localization</b>	Cytoplasm
<b>Applications</b>	Immunohistochemistry (FFPE) : 1-2ug/ml
<b>Limitations</b>	This Cytokeratin CAM5.2 antibody is available for research use only.



IHC staining of FFPE human breast carcinoma tissue with Cytokeratin CAM5.2 antibody (clone CAM5.2). HIER: boil tissue sections in pH 9 10mM Tris with 1mM EDTA for 20 min and allow to cool before testing.

### Description

### Application Notes

Optimal dilution of the Cytokeratin CAM5.2 antibody should be determined by the researcher.

### Immunogen

The human colorectal carcinoma cell line HT29 was used as the immunogen for the was used as the immunogen for the

Cytokeratin CAM5.2 antibody.

## **Storage**

Aliquot the Cytokeratin CAM5.2 antibody and store frozen at -20oC or colder. Avoid repeated freeze-thaw cycles.