

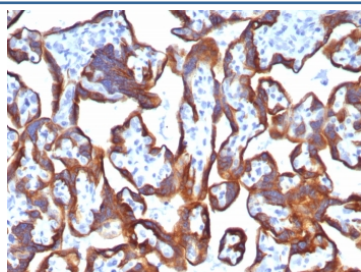
## Cytokeratin 7 Antibody [clone KRT7/8121R] (V4285)

Catalog No.	Formulation	Size
V4285-100UG	0.2 mg/ml in 1X PBS with 0.1 mg/ml BSA (US sourced), 0.05% sodium azide	100 ug
V4285-20UG	0.2 mg/ml in 1X PBS with 0.1 mg/ml BSA (US sourced), 0.05% sodium azide	20 ug
V4285SAF-100UG	1 mg/ml in 1X PBS; BSA free, sodium azide free	100 ug

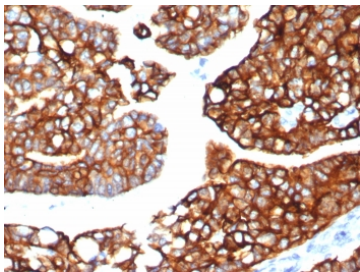
Recombinant **RABBIT MONOCLONAL**

[Bulk quote request](#)

<b>Availability</b>	1-3 business days
<b>Species Reactivity</b>	Human
<b>Format</b>	Purified
<b>Clonality</b>	Recombinant Rabbit Monoclonal
<b>Isotype</b>	Rabbit IgG, kappa
<b>Clone Name</b>	KRT7/8121R
<b>Purity</b>	Protein A/G affinity
<b>UniProt</b>	P08729
<b>Localization</b>	Cytoplasm
<b>Applications</b>	Immunohistochemistry (FFPE) : 1-2ug/ml for 30 minutes at RT
<b>Limitations</b>	This Cytokeratin 7 antibody is available for research use only.



IHC staining of FFPE human placental tissue with Cytokeratin 7 antibody (clone KRT7/8121R). HIER: boil tissue sections in pH 9 10mM Tris with 1mM EDTA for 20 min and allow to cool before testing.



IHC staining of FFPE human lung carcinoma tissue with Cytokeratin 7 antibody (clone KRT7/8121R). HIER: boil tissue sections in pH 9 10mM Tris with 1mM EDTA for 20 min and allow to cool before testing.

## Description

Cytokeratin 7 in humans is a protein encoded by the KRT7 gene. It is always as a keratin pair with Cytokeratin 19. Cytokeratin 7 is expressed on most ductal and glandular epithelium including lung, breast, bladder and female genital tract, but not in most gastrointestinal epithelium, prostate, hepatocyte and squamous epithelium. In tumor tissues, its expression is absent in colon cancer, prostate cancer and squamous carcinomas. Cytokeratin 7 is often used in concert with Cytokeratin 20 and CDX-2 to aid in distinguishing ovarian, pulmonary and breast carcinomas (CK7+) from colon carcinomas (CK7-).

## Application Notes

Optimal dilution of the Cytokeratin 7 antibody should be determined by the researcher.

## Immunogen

A recombinant partial protein sequence (within amino acids 1-200) from the human protein was used as the immunogen for the Cytokeratin 7 antibody.

## Storage

Aliquot the Cytokeratin 7 antibody and store frozen at -20°C or colder. Avoid repeated freeze-thaw cycles.