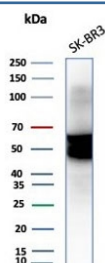


Cytokeratin 7 Antibody [clone KRT7/3733] (V4278)

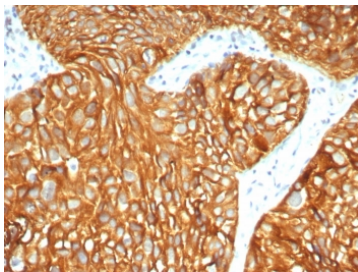
Catalog No.	Formulation	Size
V4278-100UG	0.2 mg/ml in 1X PBS with 0.1 mg/ml BSA (US sourced), 0.05% sodium azide	100 ug
V4278-20UG	0.2 mg/ml in 1X PBS with 0.1 mg/ml BSA (US sourced), 0.05% sodium azide	20 ug
V4278SAF-100UG	1 mg/ml in 1X PBS; BSA free, sodium azide free	100 ug

[Bulk quote request](#)

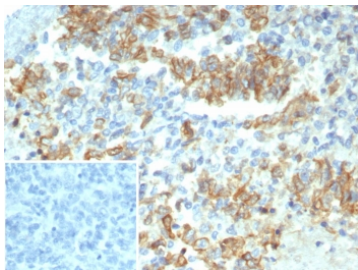
Availability	1-3 business days
Species Reactivity	Human
Format	Purified
Clonality	Monoclonal (mouse origin)
Isotype	Mouse IgG1, kappa
Clone Name	KRT7/3733
Purity	Protein A/G affinity
UniProt	P08729
Localization	Cytoplasm
Applications	Western Blot : 1-2ug/ml Immunohistochemistry (FFPE) : 1-2ug/ml for 30 minutes at RT
Limitations	This Cytokeratin 7 antibody is available for research use only.



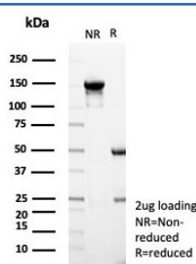
Western blot testing of human SK-BR-3 cell lysate with Cytokeratin-7 antibody (clone KRT7/3733).



IHC staining of FFPE human bladder carcinoma with Cytokeratin-7 antibody (clone KRT7/3733). HIER: boil tissue sections in pH 9 10mM Tris with 1mM EDTA for 20 min and allow to cool before testing.



IHC staining of FFPE human ovarian carcinoma tissue with Cytokeratin-7 antibody (clone KRT7/3733). Inset: PBS used in place of primary Ab (secondary Ab negative control). HIER: boil tissue sections in pH 9 10mM Tris with 1mM EDTA for 20 min and allow to cool before testing.



SDS-PAGE analysis of purified, BSA-free Cytokeratin-7 antibody (clone KRT7/3733) as confirmation of integrity and purity.

Description

It recognizes an intermediate filament protein (IFP) of 55kDa, which is identified as cytokeratin 7. This mAb is highly specific to cytokeratin 7 and shows no cross-reaction with other IFPs. Cytokeratin 7 is a basic cytokeratin, which is found in most glandular and transitional epithelia but not in the stratified squamous epithelia. Keratin 7 is expressed in the epithelial cells of ovary, lung, and breast but not of colon, prostate, or gastrointestinal tract. mAb to cytokeratin 7 is highly useful in distinguishing ovarian carcinomas (keratin 7+) from colon carcinomas (keratin 7-).

Application Notes

Optimal dilution of the Cytokeratin 7 antibody should be determined by the researcher.

Immunogen

Recombinant full-length human protein was used as the immunogen for the Cytokeratin 7 antibody.

Storage

Aliquot the Cytokeratin 7 antibody and store frozen at -20oC or colder. Avoid repeated freeze-thaw cycles.

