

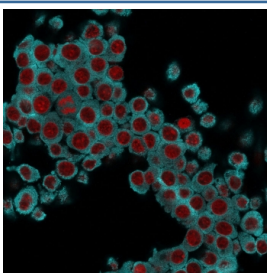
Cytokeratin 6 Antibody [clone SPM269] (V9037)

Catalog No.	Formulation	Size
V9037-100UG	0.2 mg/ml in 1X PBS with 0.1 mg/ml BSA (US sourced) and 0.05% sodium azide	100 ug
V9037-20UG	0.2 mg/ml in 1X PBS with 0.1 mg/ml BSA (US sourced) and 0.05% sodium azide	20 ug
V9037SAF-100UG	1 mg/ml in 1X PBS; BSA free, sodium azide free	100 ug
V9037IHC-7ML	Prediluted in 1X PBS with 0.1 mg/ml BSA (US sourced) and 0.05% sodium azide; *For IHC use only*	7 ml

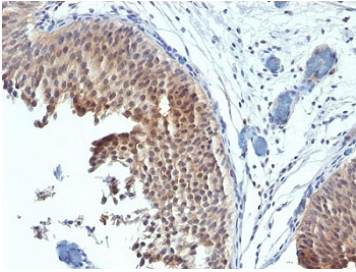
 Citations (1)

[Bulk quote request](#)

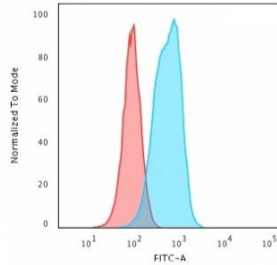
Availability	1-3 business days
Species Reactivity	Human, Mouse
Format	Purified
Clonality	Monoclonal (mouse origin)
Isotype	Mouse IgG2a, kappa
Clone Name	SPM269
Purity	Protein G affinity chromatography
UniProt	P02538, P04259, P48668
Localization	Cytoplasmic
Applications	Flow Cytometry : 1-2ug/million cells Immunofluorescence : 1-2ug/ml Immunohistochemistry (FFPE) : 1-2ug/ml for 30 min at RT
Limitations	This Cytokeratin 6 antibody is available for research use only.



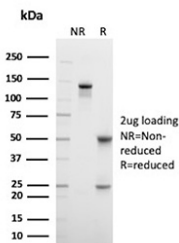
Immunofluorescent staining of fixed mouse RAW cells with Cytokeratin 6 antibody (clone SPM269, cyan) and Reddot nuclear stain (red).



IHC: Formalin-fixed, paraffin-embedded human bladder carcinoma stained with Cytokeratin 6 antibody (clone SPM269).



Flow cytometry testing of fixed mouse RAW cells with Cytokeratin 6 antibody (clone SPM269); Red=isotype control, Blue= Cytokeratin 6 antibody.



SDS-PAGE analysis of purified, BSA-free Cytokeratin 6 antibody (clone SPM269) as confirmation of integrity and purity.

Description

In humans, multiple isoforms of Cytokeratin 6 (6A-6F), encoded by several highly homologous genes, have distinct tissue expression patterns, and Cytokeratin 6A is the dominant form in epithelial tissue. The gene encoding human Cytokeratin 6A maps to chromosome 12q13, and mutations in this gene are linked to several inheritable hair and skin pathologies. Keratins 6 and 16 are expressed in keratinocytes, which are undergoing rapid turnover in the suprabasal region (also known as hyper-proliferation-related keratins). Keratin 6 is found in hair follicles, suprabasal cells of a variety of internal stratified epithelia, in epidermis, in both normal and hyper-proliferative situations. Epidermal injury results in activation of keratinocytes, which express CK6 and CK16. CK6 is strongly expressed in about 75% of head and neck squamous cell carcinomas. Expression of CK6 is particularly associated with differentiation.

Application Notes

The optimal dilution of the Cytokeratin 6 antibody for each application should be determined by the researcher.

1. Staining of formalin-fixed tissues requires boiling tissue sections in pH 9 10mM Tris with 1mM EDTA for 10-20 min followed by cooling at RT for 20 minutes.
2. The prediluted format is supplied in a dropper bottle and is optimized for use in IHC. After epitope retrieval step (if required), drip mAb solution onto the tissue section and incubate at RT for 30 min.

Immunogen

Amino acids GSSTIKYTTTS from the C-terminus of human keratin 6 was used as the immunogen for this Cytokeratin 6 antibody.

Storage

Store the Cytokeratin 6 antibody at 2-8°C (with azide) or aliquot and store at -20°C or colder (without azide).

