

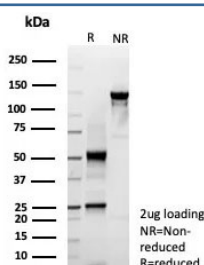
## Cytokeratin 6 Antibody / Pan [clone rKRT6/9402] (V5401)

Catalog No.	Formulation	Size
V5401-100UG	0.2 mg/ml in 1X PBS with 0.1 mg/ml BSA (US sourced), 0.05% sodium azide	100 ug
V5401-20UG	0.2 mg/ml in 1X PBS with 0.1 mg/ml BSA (US sourced), 0.05% sodium azide	20 ug
V5401SAF-100UG	1 mg/ml in 1X PBS; BSA free, sodium azide free	100 ug

Recombinant **MOUSE MONOCLONAL**

[Bulk quote request](#)

Availability	1-3 business days
Species Reactivity	Human
Format	Purified
Clonality	Recombinant Mouse Monoclonal
Isotype	Rabbit IgG, kappa
Clone Name	rKRT6/9402
Purity	Protein A/G affinity
UniProt	P02538
Localization	Cytoplasm
Applications	Immunohistochemistry (FFPE) : 1-2ug/ml
Limitations	This Cytokeratin 6 antibody is available for research use only.



SDS-PAGE analysis of purified, BSA-free KRT6A antibody (clone rKRT6/9402) as confirmation of integrity and purity.

## Description

Cytokeratin 6 is an epidermis-specific type I keratin involved in wound healing. Involved in the activation of follicular keratinocytes after wounding, while it does not play a major role in keratinocyte proliferation or migration. This protein always paired with the type-I keratin K16. Cytokeratin 6 have been identified in epidermis only in samples from plantar glabrous skin while in hairy skin this keratin appeared to be absent in interfollicular epidermis but were clearly present in

hair follicle outer root sheath, and this protein also consistently expressed in non-keratinizing stratified squamous epithelia. Among tumors, cytokeratin 6 is typically and strongly expressed in squamous cell carcinomas of different sites, preferentially in inner, maturing layers of the tumor cell nests. Cytokeratin 6 is always used with cytokeratin 5 and is a useful aid for classification of epithelioid mesotheliomas.

## **Application Notes**

Optimal dilution of the Cytokeratin 6 antibody should be determined by the researcher.

## **Immunogen**

A recombinant fragment (within amino acids 400-564) of human KRT6 was used as the immunogen for the Cytokeratin 6 antibody. The immunogen sequence is common to forms A, B and C of the Cytokeratin 6 protein.

## **Storage**

Aliquot the Cytokeratin 6 antibody and store frozen at -20oC or colder. Avoid repeated freeze-thaw cycles.