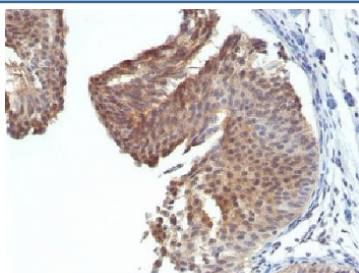


## Cytokeratin 6 Antibody [clone KRT6/1702] (V3301)

Catalog No.	Formulation	Size
V3301-100UG	0.2 mg/ml in 1X PBS with 0.1 mg/ml BSA (US sourced) and 0.05% sodium azide	100 ug
V3301-20UG	0.2 mg/ml in 1X PBS with 0.1 mg/ml BSA (US sourced) and 0.05% sodium azide	20 ug
V3301SAF-100UG	1 mg/ml in 1X PBS; BSA free, sodium azide free	100 ug

[Bulk quote request](#)

<b>Availability</b>	1-3 business days
<b>Species Reactivity</b>	Human, Mouse
<b>Format</b>	Purified
<b>Clonality</b>	Monoclonal (mouse origin)
<b>Isotype</b>	Mouse IgG2a, kappa
<b>Clone Name</b>	KRT6/1702
<b>Purity</b>	Protein G affinity chromatography
<b>UniProt</b>	P02538
<b>Localization</b>	Cytoplasmic
<b>Applications</b>	Immunohistochemistry (FFPE) : 0.1-0.2ug/ml for 30 min at RT
<b>Limitations</b>	This Cytokeratin 6 antibody is available for research use only.



IHC testing of FFPE human bladder carcinoma with Cytokeratin 6 antibody (clone KRT6/1702). Required HIER: boil tissue sections in 10mM citrate buffer, pH 6, for 10-20 min.

## Description

This mAb recognizes a protein of 56kDa, identified as Cytokeratin 6 (CK6). In humans, multiple isoforms of Cytokeratin 6 (6A-6F), encoded by several highly homologous genes, have distinct tissue expression patterns, and Cytokeratin 6A is

the dominant form in epithelial tissue. The gene encoding human Cytokeratin 6A maps to chromosome 12q13, and mutations in this gene are linked to several inheritable hair and skin pathologies. Keratins 6 and 16 are expressed in keratinocytes, which are undergoing rapid turnover in the suprabasal region (also known as hyper-proliferation-related keratins). Keratin 6 is found in hair follicles, suprabasal cells of a variety of internal stratified epithelia, in epidermis, in both normal and hyper-proliferative situations. Epidermal injury results in activation of keratinocytes, which express CK6 and CK16. CK6 is strongly expressed in about 75% of head and neck squamous cell carcinomas. Expression of CK6 is particularly associated with differentiation.

## **Application Notes**

Optimal dilution of the Cytokeratin 6 antibody should be determined by the researcher.

## **Immunogen**

Recombinant human CK6 protein was used as the immunogen for the Cytokeratin 6 antibody.

## **Storage**

Store the Cytokeratin 6 antibody at 2-8oC (with azide) or aliquot and store at -20oC or colder (without azide).