

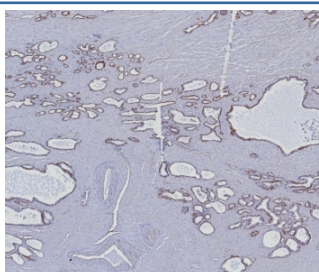
## Cytokeratin 5/6 Antibody [clone KRT5.6/8275R] (V4292)

Catalog No.	Formulation	Size
V4292-100UG	0.2 mg/ml in 1X PBS with 0.1 mg/ml BSA (US sourced), 0.05% sodium azide	100 ug
V4292-20UG	0.2 mg/ml in 1X PBS with 0.1 mg/ml BSA (US sourced), 0.05% sodium azide	20 ug
V4292SAF-100UG	1 mg/ml in 1X PBS; BSA free, sodium azide free	100 ug

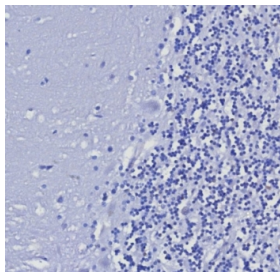
Recombinant **RABBIT MONOCLONAL**

[Bulk quote request](#)

<b>Availability</b>	1-3 business days
<b>Species Reactivity</b>	Human
<b>Format</b>	Purified
<b>Clonality</b>	Recombinant Rabbit Monoclonal
<b>Isotype</b>	Rabbit IgG, kappa
<b>Clone Name</b>	KRT5.6/8275R
<b>Purity</b>	Protein A/G affinity
<b>UniProt</b>	P13647, P02538
<b>Localization</b>	Cytoplasm
<b>Applications</b>	Immunohistochemistry (FFPE) : 1-2ug/ml
<b>Limitations</b>	This Cytokeratin 5/6 antibody is available for research use only.



IHC staining of FFPE human prostate carcinoma tissue with Cytokeratin 5/6 antibody (clone KRT5.6/8275R). HIER: boil tissue sections in pH 9 10mM Tris with 1mM EDTA for 20 min and allow to cool before testing.



Negative control: IHC testing of FFPE human brain tissue with Cytokeratin 5/6 antibody (clone KRT5.6/8275R) at 2ug/ml. HIER: boil tissue sections in pH 9 10mM Tris with 1mM EDTA for 20 min and allow to cool before testing.

## Description

Cytokeratin 5 is a basic protein that is closely related to Cytokeratin 6. They share similar tissue distribution and are found in various proportions in many non-keratinizing stratified squamous epithelia eg. tongue mucosa, as well as in basal epithelia of trachea, basal cells of epidermis, hair follicles, sebaceous and sweat glands of skin, luminal cells of the mammary gland, basal cells of prostate, urothelium, vagina and endocervical mucosa. Cytokeratins 5 and 6 are also expressed in basal cell epitheliomas, squamous cell carcinomas of skin, tongue, epiglottis and of the rectal-anal region. Cytokeratin 5/6 mAb is a useful aid for classification of epithelioid mesotheliomas.

## Application Notes

Optimal dilution of the Cytokeratin 5/6 antibody should be determined by the researcher.

## Immunogen

Human Cytokeratin 5- and Cytokeratin 6-homologous recombinant protein fragments were used as the immunogen for the Cytokeratin 5/6 antibody.

## Storage

Aliquot the Cytokeratin 5/6 antibody and store frozen at -20oC or colder. Avoid repeated freeze-thaw cycles.