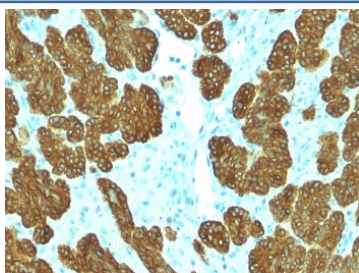


Cytokeratin 5/6 Antibody [clone KRT5.6/2090] (V8493)

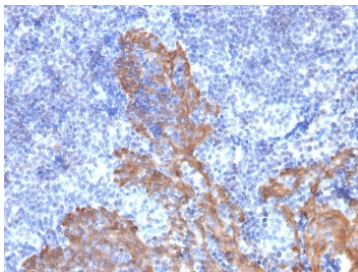
Catalog No.	Formulation	Size
V8493-100UG	0.2 mg/ml in 1X PBS with 0.1 mg/ml BSA (US sourced) and 0.05% sodium azide	100 ug
V8493-20UG	0.2 mg/ml in 1X PBS with 0.1 mg/ml BSA (US sourced) and 0.05% sodium azide	20 ug
V8493SAF-100UG	1 mg/ml in 1X PBS; BSA free, sodium azide free	100 ug

Bulk quote request

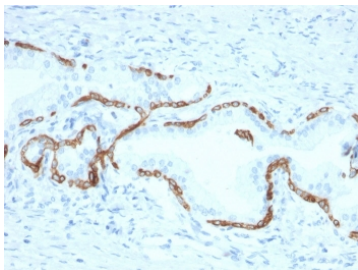
Availability	1-3 business days
Species Reactivity	Human
Format	Purified
Clonality	Monoclonal (mouse origin)
Isotype	Mouse IgG1, kappa
Clone Name	KRT5.6/2090
Purity	Protein G affinity chromatography
UniProt	P13647; P02538
Localization	Cytoplasmic
Applications	Immunohistochemistry (FFPE) : 1-2ug/ml for 30 min at RT
Limitations	This Cytokeratin 5/6 antibody is available for research use only.



IHC staining of FFPE human basal cell carcinoma with Cytokeratin 5/6 antibody (clone KRT5.6/2090). HIER: boil tissue sections in pH 9 10mM Tris with 1mM EDTA for 20 min and allow to cool before testing.

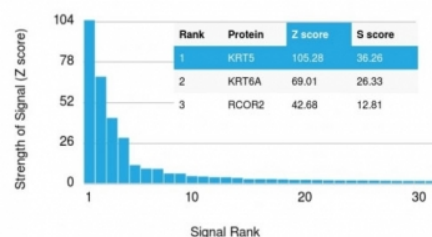


IHC staining of FFPE human tonsil with Cytokeratin 5/6 antibody (clone KRT5.6/2090).
 HIER: boil tissue sections in pH 9 10mM Tris with 1mM EDTA for 20 min and allow to cool before testing.

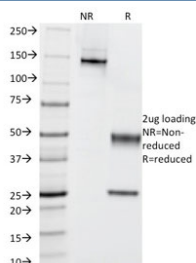


IHC staining of FFPE human prostate carcinoma with Cytokeratin 5/6 antibody (clone KRT5.6/2090).
 HIER: boil tissue sections in pH 9 10mM Tris with 1mM EDTA for 20 min and allow to cool before testing.

Human Protein Microarray Specificity Validation



Analysis of HuProt(TM) microarray containing more than 19,000 full-length human proteins using Cytokeratin 5/6 antibody (clone KRT5.6/2090). These results demonstrate the foremost specificity of the KRT5.6/2090 mAb. Z- and S- score: The Z-score represents the strength of a signal that an antibody (in combination with a fluorescently-tagged anti-IgG secondary Ab) produces when binding to a particular protein on the HuProt(TM) array. Z-scores are described in units of standard deviations (SD's) above the mean value of all signals generated on that array. If the targets on the HuProt(TM) are arranged in descending order of the Z-score, the S-score is the difference (also in units of SD's) between the Z-scores. The S-score therefore represents the relative target specificity of an Ab to its intended target.



SDS-PAGE analysis of purified, BSA-free Cytokeratin 5/6 antibody (clone KRT5.6/2090) as confirmation of integrity and purity.

Description

It recognizes polypeptides of 58kDa and 56kDa, identified as cytokeratin 5 and 6 respectively. It shows no reaction with keratin 1, 8, or 19. It stains the basal cells of squamous and glandular epithelia, part of stratum spinosum of squamous epithelium, myoepithelium, and mesothelium. It does not stain adenous epithelium. Therefore, this antibody can be used to distinguish squamous carcinoma from adenocarcinoma, and to differentiate epithelioid mesothelioma from non-epithelioid mesothelioma and adenocarcinoma. It is also a useful antibody in the identification of mesothelioma and lung squamous cell carcinoma.

Application Notes

Optimal dilution of the Cytokeratin 5/6 antibody should be determined by the researcher.

Immunogen

Recombinant full-length human KRT5 protein was used as the immunogen for the Cytokeratin 5/6 antibody.

Storage

Store the Cytokeratin 5/6 antibody at 2-8oC (with azide) or aliquot and store at -20oC or colder (without azide).