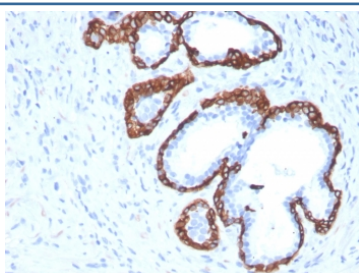


Cytokeratin 5 Antibody / KRT5 / CK5 [clone KRT5/3594] (V7568)

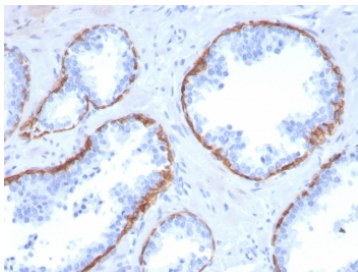
Catalog No.	Formulation	Size
V7568-100UG	0.2 mg/ml in 1X PBS with 0.1 mg/ml BSA (US sourced) and 0.05% sodium azide	100 ug
V7568-20UG	0.2 mg/ml in 1X PBS with 0.1 mg/ml BSA (US sourced) and 0.05% sodium azide	20 ug
V7568SAF-100UG	1 mg/ml in 1X PBS; BSA free, sodium azide free	100 ug
V7568IHC-7ML	Prediluted in 1X PBS with 0.1 mg/ml BSA (US sourced) and 0.05% sodium azide; *For IHC use only*	7 ml

[Bulk quote request](#)

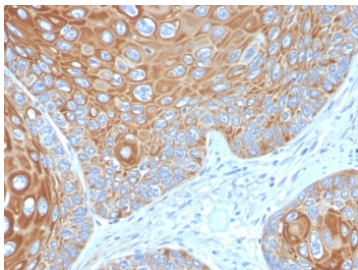
Availability	1-3 business days
Species Reactivity	Human
Format	Purified
Clonality	Monoclonal (mouse origin)
Isotype	Mouse IgG1, kappa
Clone Name	KRT5/3594
Purity	Protein G affinity chromatography
UniProt	P13647
Localization	Cytoplasmic
Applications	Immunohistochemistry (FFPE) : 1-2ug/ml for 30 min at RT
Limitations	This Cytokeratin 5 antibody is available for research use only.



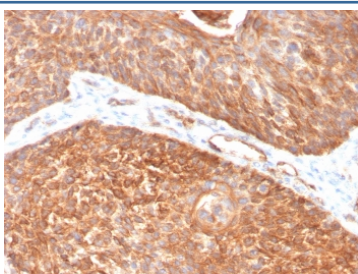
IHC staining of FFPE human prostate carcinoma with Cytokeratin 5 antibody (clone KRT5/3594). HIER: boil tissue sections in pH6, 10mM citrate buffer, for 10-20 min and allow to cool before testing.



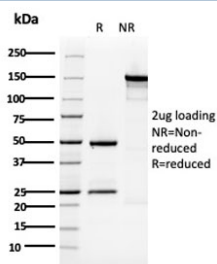
IHC staining of FFPE human prostate carcinoma with Cytokeratin 5 antibody (clone KRT5/3594). HIER: boil tissue sections in pH6, 10mM citrate buffer, for 10-20 min and allow to cool before testing.



IHC staining of FFPE human cervical carcinoma with Cytokeratin 5 antibody (clone KRT5/3594). HIER: boil tissue sections in pH6, 10mM citrate buffer, for 10-20 min and allow to cool before testing.



IHC staining of FFPE human pancreas with Cytokeratin 5 antibody (clone KRT5/3594). HIER: boil tissue sections in pH6, 10mM citrate buffer, for 10-20 min and allow to cool before testing.



SDS-PAGE analysis of purified, BSA-free Cytokeratin 5 antibody (clone KRT5/3594) as confirmation of integrity and purity.

Human Protein Microarray Specificity Validation



Analysis of HuProt(TM) microarray containing more than 19,000 full-length human proteins using Cytokeratin 5 antibody (clone KRT5/3594). These results demonstrate the foremost specificity of the KRT5/3594 mAb. Z- and S- score: The Z-score represents the strength of a signal that an antibody (in combination with a fluorescently-tagged anti-IgG secondary Ab) produces when binding to a particular protein on the HuProt(TM) array. Z-scores are described in units of standard deviations (SD's) above the mean value of all signals generated on that array. If the targets on the HuProt(TM) are arranged in descending order of the Z-score, the S-score is the difference (also in units of SD's) between the Z-scores. The S-score therefore represents the relative target specificity of an Ab to its intended target.

Description

This MAbs recognizes a protein of 58kDa, which is identified as Cytokeratin 5 (KRT5). This type II cytokeratin is specifically expressed in the basal layer of the epidermis with family member KRT14. Antibodies to KRT5 identify basal cells of squamous and glandular epithelia, myoepithelia, and mesothelium. Cytokeratin 5 antibody has been reported useful in the differential diagnosis of metastatic carcinoma in the pleura versus epithelioid mesothelioma. Almost all squamous cell carcinomas, half of transitional carcinomas, and many undifferentiated large cell carcinomas express. Anti-KRT5, along with anti-p63, affords a high sensitivity and specificity for squamous differentiation. Myoepithelial cells of the breast,

glandular epithelia, and basal cells of the prostate are labeled with anti-KRT5.

Application Notes

Optimal dilution of the Cytokeratin 5 antibody should be determined by the researcher.

1. The prediluted format is supplied in a dropper bottle and is optimized for use in IHC. After epitope retrieval step (if required), drip mAb solution onto the tissue section and incubate at RT for 30 min.

Immunogen

A recombinant human Cytokeratin 5 protein fragment within amino acids 316-590 was used as the immunogen for the Cytokeratin 5 antibody.

Storage

Store the Cytokeratin 5 antibody at 2-8oC (with azide) or aliquot and store at -20oC or colder (without azide).