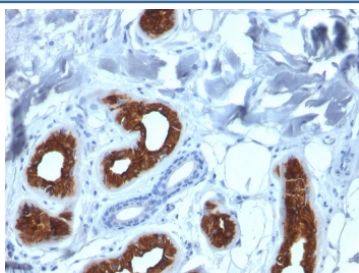


Cytokeratin 3 Antibody / KRT3 [clone KRT3/2130] (V7909)

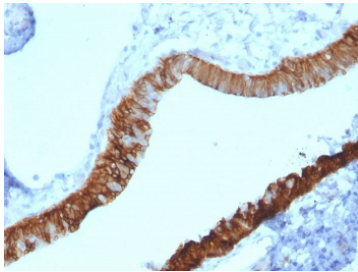
Catalog No.	Formulation	Size
V7909-100UG	0.2 mg/ml in 1X PBS with 0.1 mg/ml BSA (US sourced) and 0.05% sodium azide	100 ug
V7909-20UG	0.2 mg/ml in 1X PBS with 0.1 mg/ml BSA (US sourced) and 0.05% sodium azide	20 ug
V7909SAF-100UG	1 mg/ml in 1X PBS; BSA free, sodium azide free	100 ug

Bulk quote request

Availability	1-3 business days
Species Reactivity	Human
Format	Purified
Clonality	Monoclonal (mouse origin)
Isotype	Mouse IgG1, kappa
Clone Name	KRT3/2130
Purity	Protein G affinity chromatography
UniProt	P12035
Localization	Cytoplasmic
Applications	Immunohistochemistry (FFPE) : 1-2ug/ml
Limitations	This Cytokeratin 3 antibody is available for research use only.



IHC staining of FFPE human skin with Cytokeratin 3 antibody (clone KRT3/2130). HIER: boil tissue sections in pH 9 10mM Tris with 1mM EDTA for 20 min and allow to cool before testing.

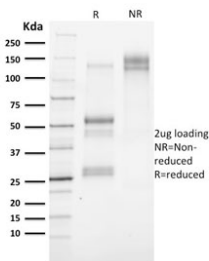


IHC staining of FFPE human ovary with Cytokeratin 3 antibody (clone KRT3/2130).
 HIER: boil tissue sections in pH 9 10mM Tris with 1mM EDTA for 20 min and allow to cool before testing.

Human Protein Microarray Specificity Validated



Analysis of HuProt(TM) microarray containing more than 19,000 full-length human proteins using Cytokeratin 3 antibody (clone KRT3/2130). These results demonstrate the foremost specificity of the KRT3/2130 mAb. Z- and S- score: The Z-score represents the strength of a signal that an antibody (in combination with a fluorescently-tagged anti-IgG secondary Ab) produces when binding to a particular protein on the HuProt(TM) array. Z-scores are described in units of standard deviations (SD's) above the mean value of all signals generated on that array. If the targets on the HuProt(TM) are arranged in descending order of the Z-score, the S-score is the difference (also in units of SD's) between the Z-scores. The S-score therefore represents the relative target specificity of an Ab to its intended target.



SDS-PAGE analysis of purified, BSA-free Cytokeratin 3 antibody (clone KRT3/2130) as confirmation of integrity and purity.

Description

The protein encoded by this gene is a member of the keratin gene family. The type II cytokeratins consist of basic or neutral proteins, which are arranged in pairs of heterotypic keratin chains co-expressed during differentiation of simple and stratified epithelial tissues. This type II cytokeratin is specifically expressed in the corneal epithelium with family member KRT12 and mutations in these genes have been associated with Meesmann's Corneal Dystrophy.

Application Notes

Optimal dilution of the Cytokeratin 3 antibody should be determined by the researcher.

Immunogen

A recombinant full-length human protein was used as the immunogen for this Cytokeratin 3 antibody.

Storage

Store the Cytokeratin 3 antibody at 2-8oC (with azide) or aliquot and store at -20oC or colder (without azide).

