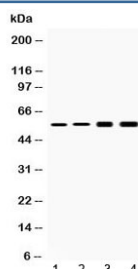


## Cytokeratin 18 Antibody (R32666)

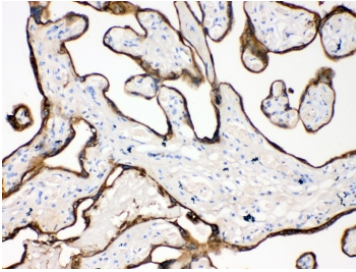
Catalog No.	Formulation	Size
R32666	0.5mg/ml if reconstituted with 0.2ml sterile DI water	100 ug

**Bulk quote request**

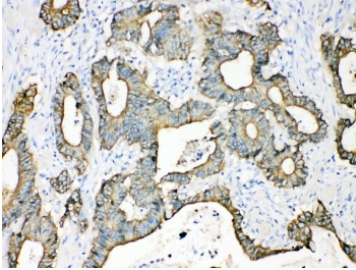
<b>Availability</b>	1-3 business days
<b>Species Reactivity</b>	Human, Mouse, Rat
<b>Format</b>	Antigen affinity purified
<b>Clonality</b>	Polyclonal (rabbit origin)
<b>Isotype</b>	Rabbit IgG
<b>Purity</b>	Antigen affinity
<b>Buffer</b>	Lyophilized from 1X PBS with 2.5% BSA, 0.025% sodium azide
<b>UniProt</b>	P05783
<b>Localization</b>	Cytoplasmic
<b>Applications</b>	Western Blot : 0.5-1ug/ml Immunohistochemistry (FFPE) : 1-2ug/ml Immunofluorescence (FFPE) : 1-2ug/ml Flow Cytometry : 1-3ug/10 <sup>6</sup> cells
<b>Limitations</b>	This Cytokeratin 18 antibody is available for research use only.



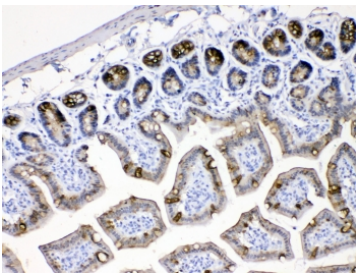
Western blot testing of 1) rat liver, 2) mouse liver, 3) human HeLa and 4) human HepG2 lysate with Cytokeratin 18 antibody at 0.5ug/ml. Predicted molecular weight ~48 kDa.



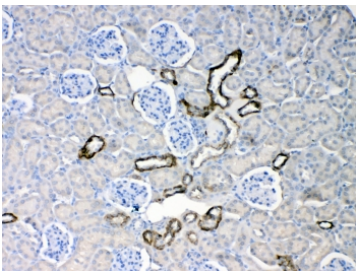
IHC testing of FFPE human placental tissue with Cytokeratin 18 antibody at 1ug/ml. Required HIER: steam section in pH6 citrate buffer for 20 min and allow to cool prior to testing.



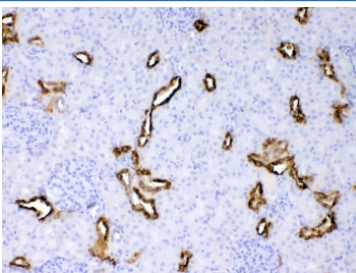
IHC testing of FFPE human intestinal cancer tissue with Cytokeratin 18 antibody at 1ug/ml. Required HIER: steam section in pH6 citrate buffer for 20 min and allow to cool prior to testing.



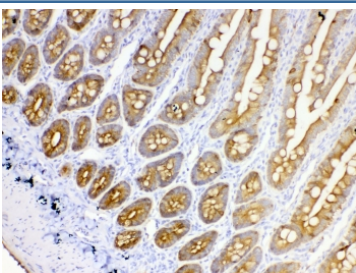
IHC testing of FFPE mouse intestinal tissue with Cytokeratin 18 antibody at 1ug/ml. Required HIER: steam section in pH6 citrate buffer for 20 min and allow to cool prior to testing.



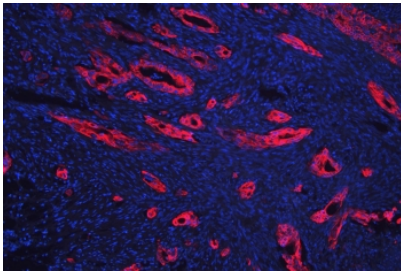
IHC testing of FFPE mouse kidney tissue with Cytokeratin 18 antibody at 1ug/ml. Required HIER: steam section in pH6 citrate buffer for 20 min and allow to cool prior to testing.



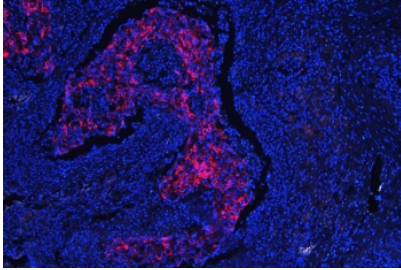
IHC testing of FFPE rat kidney tissue with Cytokeratin 18 antibody at 1ug/ml. Required HIER: steam section in pH6 citrate buffer for 20 min and allow to cool prior to testing.



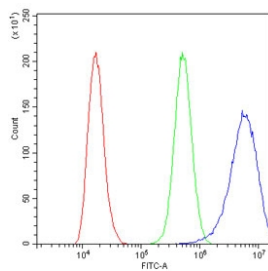
IHC testing of FFPE rat intestinal tissue with Cytokeratin 18 antibody at 1ug/ml. Required HIER: steam section in pH6 citrate buffer for 20 min and allow to cool prior to testing.



Immunofluorescent staining of FFPE human intestinal cancer with Cytokeratin 18 antibody (red) at 1ug/ml and DAPI nuclear stain (blue). HIER: steam section in pH6 citrate buffer for 20 min.



Immunofluorescent staining of FFPE human lung cancer with Cytokeratin 18 antibody (red) at 1ug/ml and DAPI nuclear stain (blue). HIER: steam section in pH6 citrate buffer for 20 min.



Flow cytometry testing of human A431 cells with Cytokeratin 18 antibody at 1ug/10<sup>6</sup> cells (blocked with goat sera); Red=cells alone, Green=isotype control, Blue=Cytokeratin 18 antibody.

## Description

Keratin 18, mapped to 12q13.13, is a type I cytokeratin. It is, together with its filament partner keratin 8, perhaps the most commonly found products of the intermediate filament gene family. They are expressed in single layer epithelial tissues of the body. Mutations in this gene have been linked to cryptogenic cirrhosis. Two transcript variants encoding the same protein have been found for this gene.

## Application Notes

Optimal dilution of the Cytokeratin 18 antibody should be determined by the researcher.

## Immunogen

Amino acids E204-H430 from the human protein were used as the immunogen for the Cytokeratin 18 antibody.

## Storage

After reconstitution, the Cytokeratin 18 antibody can be stored for up to one month at 4°C. For long-term, aliquot and store at -20°C. Avoid repeated freezing and thawing.

