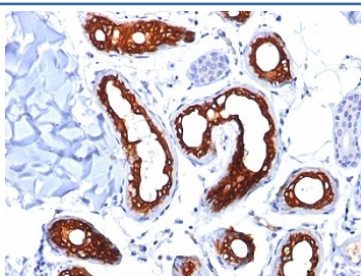


Cytokeratin 18 Antibody [clone KRT18/834] (V2672)

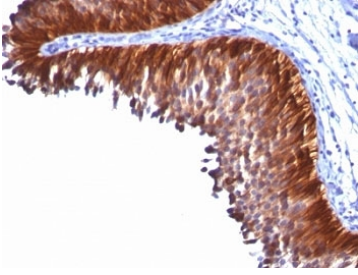
Catalog No.	Formulation	Size
V2672-100UG	0.2 mg/ml in 1X PBS with 0.1 mg/ml BSA (US sourced) and 0.05% sodium azide	100 ug
V2672-20UG	0.2 mg/ml in 1X PBS with 0.1 mg/ml BSA (US sourced) and 0.05% sodium azide	20 ug
V2672SAF-100UG	1 mg/ml in 1X PBS; BSA free, sodium azide free	100 ug
V2672IHC-7ML	Prediluted in 1X PBS with 0.1 mg/ml BSA (US sourced) and 0.05% sodium azide; *For IHC use only*	7 ml

[Bulk quote request](#)

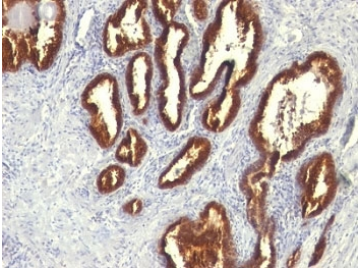
Availability	1-3 business days
Species Reactivity	Human, Rat
Format	Purified
Clonality	Monoclonal (mouse origin)
Isotype	Mouse IgG1, kappa
Clone Name	KRT18/834
Purity	Protein G affinity chromatography
UniProt	P05783
Localization	Cytoplasmic
Applications	Western Blot : 1-2ug/ml Flow Cytometry : 1-2ug/10 ⁶ cells Immunofluorescence : 1-2ug/ml Immunohistochemistry (FFPE) : 1-2ug/ml for 30 min at RT
Limitations	This Cytokeratin 18 antibody is available for research use only.



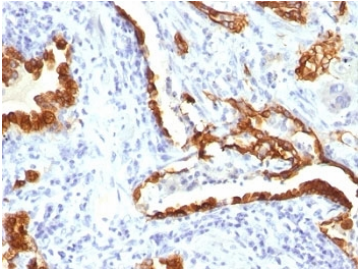
IHC: Formalin-fixed, paraffin-embedded human skin stained with Cytokeratin 18 antibody (KRT18/834).



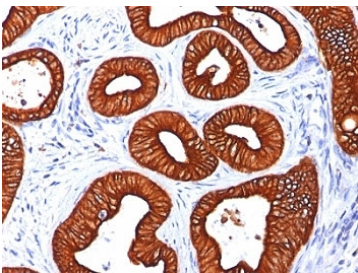
IHC: Formalin-fixed, paraffin-embedded human bladder carcinoma stained with Cytokeratin 18 antibody (KRT18/834).



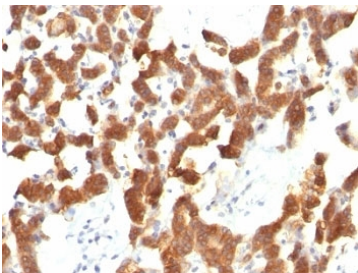
IHC: Formalin-fixed, paraffin-embedded human prostate carcinoma stained with Cytokeratin 18 antibody (KRT18/834).



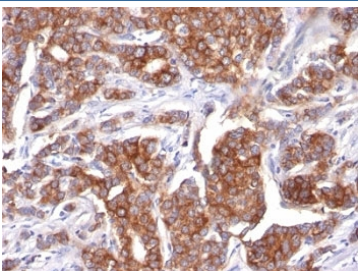
IHC: Formalin-fixed, paraffin-embedded human lung carcinoma stained with Cytokeratin 18 antibody (KRT18/834).



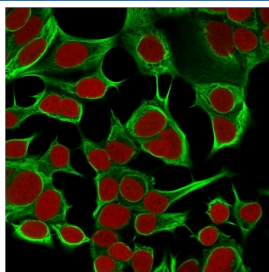
IHC: Formalin-fixed, paraffin-embedded human colon carcinoma stained with Cytokeratin 18 antibody (KRT18/834).



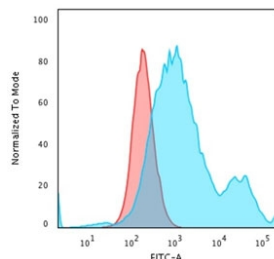
IHC: Formalin-fixed, paraffin-embedded human thyroid carcinoma stained with Cytokeratin 18 antibody (KRT18/834).



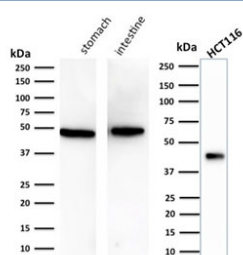
IHC: Formalin-fixed, paraffin-embedded human breast carcinoma stained with Cytokeratin 18 antibody (KRT18/834).



Immunofluorescent staining of permeabilized human MCF7 cells with Cytokeratin 18 antibody (clone KRT18/834, green) and Reddot nuclear stain (red).



Flow cytometry testing of PFA-fixed human HeLa cells with Cytokeratin 18 antibody (clone KRT18/834); Red=isotype control, Blue= Cytokeratin 18 antibody.



Western blot testing of human stomach, intestine and HCT-116 cell lysate with Cytokeratin 18 antibody (clone KRT18/834). Predicted molecular weight ~48 kDa.

Description

This mAb reacts with a wide variety of simple epithelia. It does not react with stratified squamous epithelia. It reacts with epithelial tumors of the gastrointestinal tract, lung, breast, pancreas, ovary, and thyroid. Cytokeratin 18, which belongs to the type A (acidic) subfamily of low molecular weight keratins, exists in combination with cytokeratin 8. It is reported that tissues from gastrointestinal tract are positive for both cytokeratin 8 and 18 but do not contain cytokeratin 14. Tissues from gastrointestinal tract, respiratory tract and urogenital tract, as well as endocrine and exocrine tissues and mesothelial cells are positive for cytokeratin 18.

Application Notes

Optimal dilution of the Cytokeratin 18 antibody should be determined by the researcher.

1. Staining of formalin-fixed tissues requires boiling tissue sections in pH 9 10mM Tris with 1mM EDTA for 10-20 min followed by cooling at RT for 20 min
2. The prediluted format is supplied in a dropper bottle and is optimized for use in IHC. After epitope retrieval step (if required), drip mAb solution onto the tissue section and incubate at RT for 30 min.

Immunogen

Recombinant full-length human KRT18 protein was used as the immunogen for the Cytokeratin 18 antibody.

Storage

Store the Cytokeratin 18 antibody at 2-8°C (with azide) or aliquot and store at -20°C or colder (without azide).

