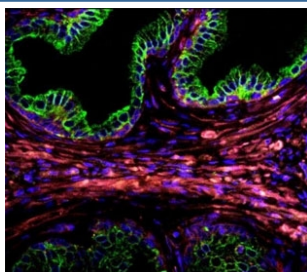


## Cytokeratin-18 Antibody (F50352)

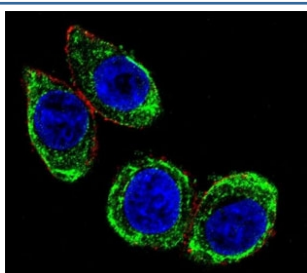
Catalog No.	Formulation	Size
F50352-0.4ML	In 1X PBS, pH 7.4, with 0.09% sodium azide	0.4 ml
F50352-0.08ML	In 1X PBS, pH 7.4, with 0.09% sodium azide	0.08 ml

[Bulk quote request](#)

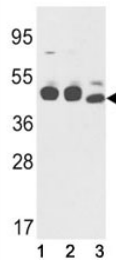
<b>Availability</b>	1-3 business days
<b>Species Reactivity</b>	Human, Mouse
<b>Format</b>	Purified
<b>Clonality</b>	Polyclonal (rabbit origin)
<b>Isotype</b>	Rabbit Ig
<b>Purity</b>	Purified
<b>UniProt</b>	P05783
<b>Applications</b>	Western Blot : 1:1000 Flow Cytometry : 1:10-1:50 Immunofluorescence : 1:10-1:50 IHC (Paraffin) : 1:10-1:50
<b>Limitations</b>	This Cytokeratin-18 antibody is available for research use only.



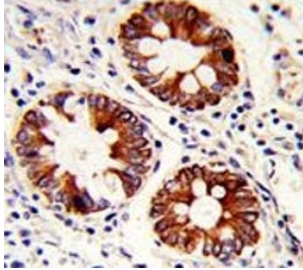
Confocal immunofluorescent analysis of Cytokeratin-18 antibody with prostate carcinoma followed by Alexa Fluor 488-conjugated goat anti-rabbit IgG (green). DAPI was used as a nuclear counterstain (blue).



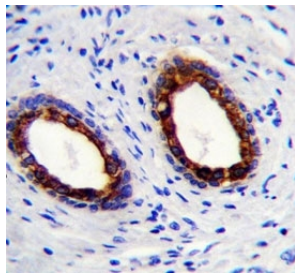
Confocal immunofluorescent analysis of Cytokeratin-18 antibody with HeLa cells followed by Alexa Fluor 488-conjugated goat anti-rabbit IgG (green). Actin filaments have been labeled with Alexa Fluor 555 Phalloidin (red). DAPI was used as a nuclear counterstain (blue).



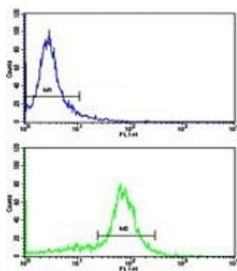
Western blot analysis of Cytokeratin-18 antibody and (1) K562, (2) NCI-H460, and (3) mouse stomach lysate. Predicted molecular weight ~48 kDa.



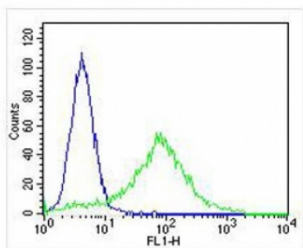
IHC analysis of FFPE human colon carcinoma with Cytokeratin-18 antibody



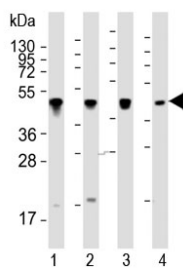
Cytokeratin-18 antibody immunohistochemistry analysis in formalin fixed and paraffin embedded human prostate carcinoma.



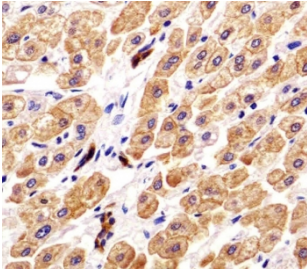
Flow cytometric analysis of WiDr cells using Cytokeratin-18 antibody (bottom histogram) compared to a negative control (top histogram). FITC-conjugated goat-anti-rabbit secondary Ab was used for the analysis.



FACS testing of fixed and permeabilized human HeLa cells with Cytokeratin-18 antibody (green) at 1:25 and negative control (blue).



Western blot testing of human 1) NCI-H460, 2) K562, 3) HeLa and 4) A431 whole cell lysate with Cytokeratin-18 antibody at 1:2000. Predicted molecular weight ~48 kDa.



IHC analysis of FFPE human liver tissue with Cytokeratin-18 antibody. Required HIER: steamed antigen retrieval with pH6 citrate buffer.

## Description

KRT18 is the type I intermediate filament chain keratin 18. Keratin 18, together with its filament partner keratin 8, are perhaps the most commonly found members of the intermediate filament family. They are expressed in single layer epithelial tissues of the body. Mutations in its gene have been linked to cryptogenic cirrhosis.

## Application Notes

Titration of the Cytokeratin-18 antibody may be required due to differences in protocols and secondary/substrate sensitivity.

## Immunogen

A portion of amino acids 401-430 from the human protein was used as the immunogen for this Cytokeratin-18 antibody.

## Storage

Aliquot the Cytokeratin-18 antibody and store frozen at -20oC or colder. Avoid repeated freeze-thaw cycles.