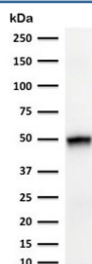


Cytokeratin 15 Antibody / KRT15 [clone CTKN15-1] (V8127)

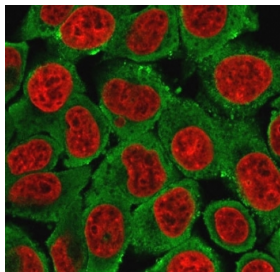
Catalog No.	Formulation	Size
V8127-100UG	0.2 mg/ml in 1X PBS with 0.1 mg/ml BSA (US sourced) and 0.05% sodium azide	100 ug
V8127-20UG	0.2 mg/ml in 1X PBS with 0.1 mg/ml BSA (US sourced) and 0.05% sodium azide	20 ug
V8127SAF-100UG	1 mg/ml in 1X PBS; BSA free, sodium azide free	100 ug

[Bulk quote request](#)

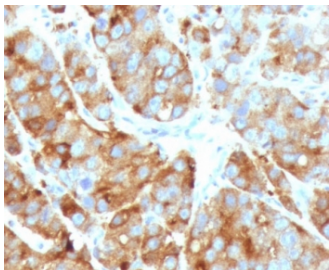
Availability	1-3 business days
Species Reactivity	Human
Format	Purified
Clonality	Monoclonal (mouse origin)
Isotype	Mouse IgG2c, kappa
Clone Name	CTKN15-1
Purity	Protein G affinity chromatography
UniProt	P19012
Localization	Cytoplasmic
Applications	Immunofluorescence : 1-2ug/ml Western Blot : 1-2ug/ml Immunohistochemistry (FFPE) : 1-2ug/ml
Limitations	This Cytokeratin 15 antibody is available for research use only.



Western blot testing of human thymus tissue and HCT-116 cell lysate with CK15 antibody (clone CTKN15-1). Expected molecular weight ~50 kDa.



Immunofluorescent staining of MeOH-fixed human MCF7 cells with Cytokeratin 15 antibody (clone CTKN15-1, green) and Reddot nuclear stain (red).



IHC staining of FFPE human prostate carcinoma with Cytokeratin 15 antibody (clone CTKN15-1). HIER: boil tissue sections in pH 9 10mM Tris with 1mM EDTA for 10-20 min and allow to cool before testing.

Description

Cytokeratin 15 is a type I cytokeratin. It is found in some progenitor basal cells within complex epithelia.

Application Notes

Optimal dilution of the Cytokeratin 15 antibody should be determined by the researcher.

Immunogen

Recombinant human protein was used as the immunogen for the Cytokeratin 15 antibody.

Storage

Store the Cytokeratin 15 antibody at 2-8°C (with azide) or aliquot and store at -20°C or colder (without azide).