

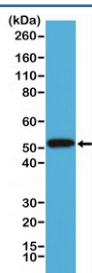
Cytokeratin-14 Antibody / CK14 / KRT14 [clone RM328] (R20353)

Catalog No.	Formulation	Size
R20353-0.1ML	Antibody in PBS with 50% glycerol, 1% BSA and 0.09% sodium azide	100 ul

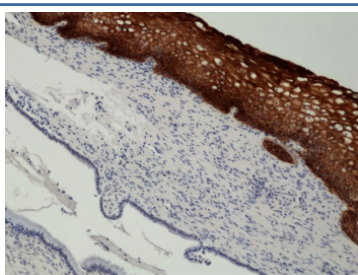
Recombinant **RABBIT MONOCLONAL**

[Bulk quote request](#)

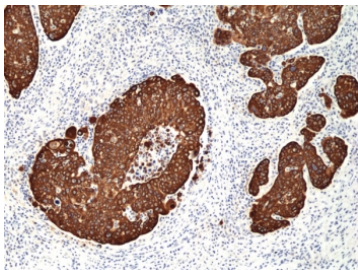
Availability	1-3 business days
Species Reactivity	Human
Format	Purified
Clonality	Recombinant Rabbit Monoclonal
Isotype	Rabbit IgG
Clone Name	RM328
Purity	Protein A purified from animal origin-free supernatant
UniProt	P02533
Localization	Cytoplasmic
Applications	Immunohistochemistry (FFPE) : 1:1000-1:2000 Western Blot : 1:1000-1:2000
Limitations	This recombinant Cytokeratin-14 antibody is available for research use only.



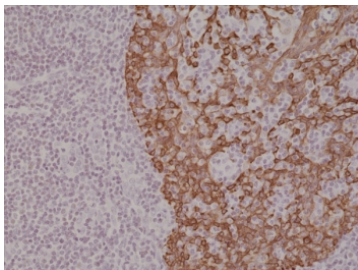
Western blot testing of human A431 cell lysate with recombinant Cytokeratin 14 antibody at 1:1000. Predicted molecular weight ~53 kDa.



IHC staining of FFPE human cervix tissue with recombinant Cytokeratin 14 antibody at 1:2000.



IHC staining of FFPE human cervical squamous cell carcinoma tissue with recombinant Cytokeratin 14 antibody at 1:2000.



IHC staining of FFPE human tonsil tissue with recombinant Cytokeratin 14 antibody at 1:2000.

Description

This antibody reacts to human Cytokeratin-14.

Application Notes

The stated application concentrations are suggested starting points. Titration of the recombinant Cytokeratin-14 antibody may be required due to differences in protocols and secondary/substrate sensitivity.

Immunogen

A peptide corresponding to C-terminus of human Cytokeratin-14 was used as the immunogen for the recombinant Cytokeratin-14 antibody.

Storage

Store the recombinant Cytokeratin-14 antibody at -20°C.