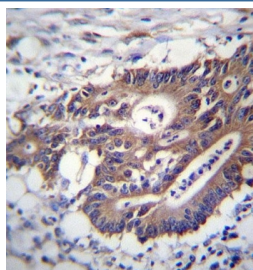


## Cytokeratin 12 Antibody / KRT12 (F54280)

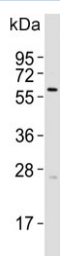
Catalog No.	Formulation	Size
F54280-0.4ML	In 1X PBS, pH 7.4, with 0.09% sodium azide	0.4 ml
F54280-0.08ML	In 1X PBS, pH 7.4, with 0.09% sodium azide	0.08 ml

[Bulk quote request](#)

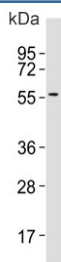
<b>Availability</b>	1-3 business days
<b>Species Reactivity</b>	Human, Mouse, Rat
<b>Format</b>	Purified
<b>Clonality</b>	Polyclonal (rabbit origin)
<b>Isotype</b>	Rabbit Ig
<b>Purity</b>	Antigen affinity purified
<b>UniProt</b>	Q99456
<b>Localization</b>	Cytoplasmic
<b>Applications</b>	Western Blot : 1:500-1:2000 Immunohistochemistry (FFPE) : 1:25 Flow Cytometry : 1:25 (1x10 <sup>6</sup> cells)
<b>Limitations</b>	This Cytokeratin 12 antibody is available for research use only.



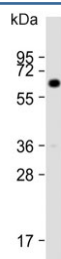
IHC testing of FFPE human colon carcinoma tissue with Cytokeratin 12 antibody. HIER: steam section in pH6 citrate buffer for 20 min and allow to cool prior to staining.



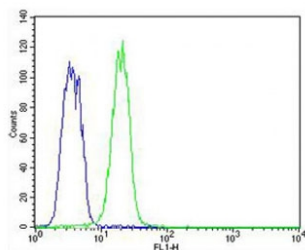
Western blot testing of human Y79 cell lysate with Cytokeratin 12 antibody. Predicted molecular weight ~54 kDa.



Western blot testing of mouse eyeball lysate with Cytokeratin 12 antibody. Predicted molecular weight ~54 kDa.



Western blot testing of rat eyeball lysate with Cytokeratin 12 antibody. Predicted molecular weight ~54 kDa.



Flow cytometry testing of fixed and permeabilized human K562 cells with Cytokeratin 12 antibody; Blue=isotype control, Green= Cytokeratin 12 antibody.

## Description

KRT12 encodes the type I intermediate filament chain keratin 12, expressed in corneal epithelia. Mutations in this gene lead to Meesmann corneal dystrophy.

## Application Notes

The stated application concentrations are suggested starting points. Titration of the Cytokeratin 12 antibody may be required due to differences in protocols and secondary/substrate sensitivity.

## Immunogen

A portion of amino acids 442-471 from the human protein were used as the immunogen for the Cytokeratin 12 antibody.

## Storage

Aliquot the Cytokeratin 12 antibody and store frozen at -20oC or colder. Avoid repeated freeze-thaw cycles.