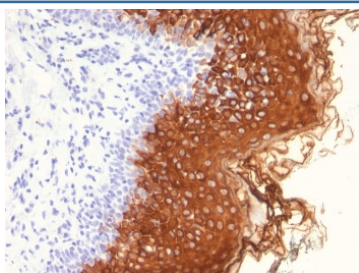


## Cytokeratin 10 Antibody / KRT10 [clone AE20] (V7915)

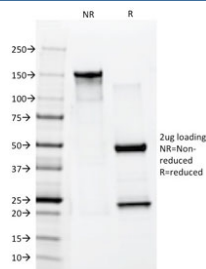
Catalog No.	Formulation	Size
V7915-100UG	0.2 mg/ml in 1X PBS with 0.1 mg/ml BSA (US sourced) and 0.05% sodium azide	100 ug
V7915-20UG	0.2 mg/ml in 1X PBS with 0.1 mg/ml BSA (US sourced) and 0.05% sodium azide	20 ug
V7915SAF-100UG	1 mg/ml in 1X PBS; BSA free, sodium azide free	100 ug

**Bulk quote request**

<b>Availability</b>	1-3 business days
<b>Species Reactivity</b>	Human, Mouse
<b>Format</b>	Purified
<b>Clonality</b>	Monoclonal (mouse origin)
<b>Isotype</b>	Mouse IgG1, kappa
<b>Clone Name</b>	AE20
<b>Purity</b>	Protein G affinity chromatography
<b>UniProt</b>	P13645
<b>Localization</b>	Cytoplasmic
<b>Applications</b>	Immunofluorescence : 1-2ug/ml Immunohistochemistry (FFPE) : 0.1-0.2ug/ml
<b>Limitations</b>	This Cytokeratin 10 antibody is available for research use only.



IHC staining of FFPE human skin with Cytokeratin 10 antibody (clone AE20). HIER: boil tissue sections in pH 9 10mM Tris with 1mM EDTA for 20 min and allow to cool before testing.



SDS-PAGE analysis of purified, BSA-free Cytokeratin 10 antibody (clone AE10) as confirmation of integrity and purity.

## Description

This MAb recognizes a protein of 56.5kDa, identified as cytokeratin 10 (CK10). CK10 is expressed in all suprabasal layers of the epidermis. In the epidermis, expression of CK10 strictly parallels the extent of differentiation; it is absent in the basal layer, appears in the first suprabasal layers and increases in concentration towards the granular layer. However, CK10 is rarely detected in early stages of vulvar squamous carcinomas (tumors less than 2 cm, clinical stage I) regardless of the tumor grade. In larger and more advanced tumors (greater than 2 cm, clinical stages II and III), CK10 is detected very frequently. Expression of CK10 is related to maturation of malignant keratinocytes, being preferentially detected in more-differentiated parts.

## Application Notes

Optimal dilution of the Cytokeratin 10 antibody should be determined by the researcher.

## Immunogen

Human Cytokeratin 10 was used as the immunogen for this Cytokeratin 10 antibody.

## Storage

Store the Cytokeratin 10 antibody at 2-8°C (with azide) or aliquot and store at -20°C or colder (without azide).