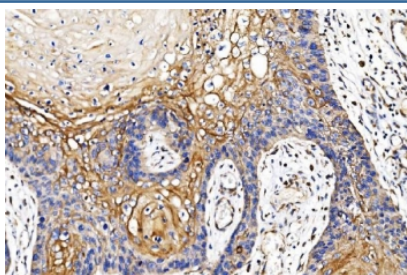


## Cytochrome P450 Reductase Antibody / POR / CYPOR [clone 7F5] (RQ6592)

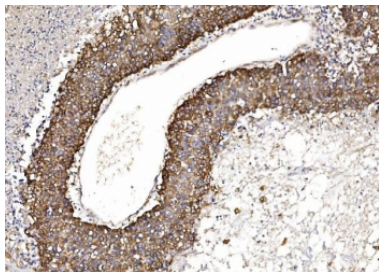
Catalog No.	Formulation	Size
RQ6592	0.5mg/ml if reconstituted with 0.2ml sterile DI water	100 ug

[Bulk quote request](#)

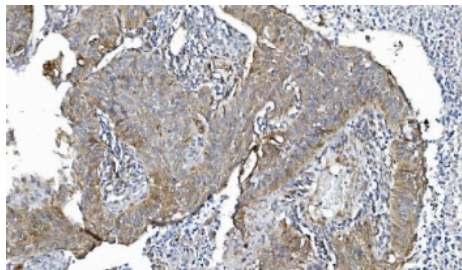
Availability	1-3 business days
Species Reactivity	Human
Format	Antigen affinity purified
Clonality	Monoclonal (mouse origin)
Isotype	Mouse IgG2b
Clone Name	7F5
Purity	Antigen affinity purified
Buffer	Lyophilized from 1X PBS with 2% Trehalose
UniProt	P16435
Localization	Cytoplasmic, cell membrane
Applications	Western Blot : 1-2ug/ml Immunohistochemistry (FFPE) : 2-5ug/ml Flow Cytometry : 1-3ug/million cells
Limitations	This Cytochrome P450 Reductase antibody is available for research use only.



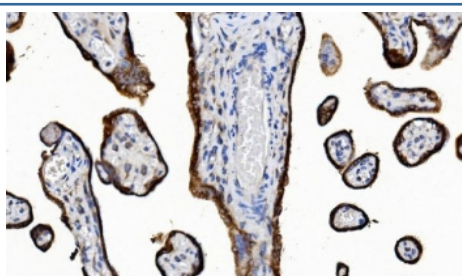
IHC staining of FFPE human esophageal squamous carcinoma tissue with Cytochrome P450 Reductase antibody. HIER: boil tissue sections in pH8 EDTA for 20 min and allow to cool before testing.



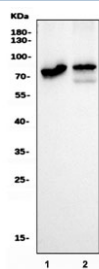
IHC staining of FFPE human liver cancer tissue with Cytochrome P450 Reductase antibody. HIER: boil tissue sections in pH8 EDTA for 20 min and allow to cool before testing.



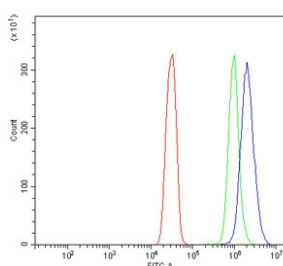
IHC staining of FFPE human lung cancer tissue with Cytochrome P450 Reductase antibody. HIER: boil tissue sections in pH8 EDTA for 20 min and allow to cool before testing.



IHC staining of FFPE human placental tissue with Cytochrome P450 Reductase antibody. HIER: boil tissue sections in pH8 EDTA for 20 min and allow to cool before testing.



Western blot testing of human 1) HepG2 and 2) A549 cell lysate with Cytochrome P450 Reductase antibody. Predicted molecular weight: ~77 kDa.



Flow cytometry testing of human SiHa cells with Cytochrome P450 Reductase antibody at 1ug/million cells (blocked with goat sera); Red=cells alone, Green=isotype control, Blue= Cytochrome P450 Reductase antibody.

## Description

POR is a membrane-bound enzyme required for electron transfer from NADPH to cytochrome P450 in the endoplasmic reticulum of the eukaryotic cell. The gene encodes an endoplasmic reticulum membrane oxidoreductase with an FAD-binding domain and a flavodoxin-like domain. The protein binds two cofactors, FAD and FMN, which allow it to donate electrons directly from NADPH to all microsomal P450 enzymes. Mutations in this gene have been associated with various diseases, including apparent combined P450C17 and P450C21 deficiency, amenorrhea and disordered steroidogenesis, congenital adrenal hyperplasia and Antley-Bixler syndrome.

## Application Notes

Optimal dilution of the Cytochrome P450 Reductase antibody should be determined by the researcher.

## Immunogen

C-terminal region amino acids RNMARDVQNTFYDIVAELGAMEHAQAVDYIKKLMTK from the human protein were used as the immunogen for the Cytochrome P450 Reductase antibody.

## Storage

After reconstitution, the Cytochrome P450 Reductase antibody can be stored for up to one month at 4oC. For long-term, aliquot and store at -20oC. Avoid repeated freezing and thawing.