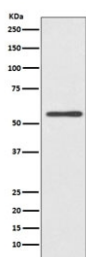


Cytochrome P450 2E1 Antibody / CYP2E1 [clone AADC-3] (RQ5118)

Catalog No.	Formulation	Size
RQ5118	Antibody in PBS with 0.02% sodium azide, 50% glycerol and 0.4-0.5mg/ml BSA	100 ul

[Bulk quote request](#)

Availability	1-2 weeks
Species Reactivity	Human, Mouse, Rat
Format	Purified
Clonality	Rabbit Monoclonal
Isotype	Rabbit IgG
Clone Name	AADC-3
Purity	Affinity purified
UniProt	P05181
Applications	Western Blot : 1:500-1:2000
Limitations	This Cytochrome P450 2E1 antibody is available for research use only.



Western blot testing of human HeLa cell lysate with Cytochrome P450 2E1 antibody.
Predicted molecular weight ~57 kDa.

Description

The CYP2E1 gene encodes a member of the cytochrome P450 superfamily of enzymes. The cytochrome P450 proteins are monooxygenases which catalyze many reactions involved in drug metabolism and synthesis of cholesterol, steroids and other lipids. This protein localizes to the endoplasmic reticulum and is induced by ethanol, the diabetic state, and starvation. The enzyme metabolizes both endogenous substrates, such as ethanol, acetone, and acetal, as well as exogenous substrates including benzene, carbon tetrachloride, ethylene glycol, and nitrosamines which are premutagens found in cigarette smoke. Due to its many substrates, this enzyme may be involved in such varied processes as gluconeogenesis, hepatic cirrhosis, diabetes, and cancer. [RefSeq]

Application Notes

Optimal dilution of the Cytochrome P450 2E1 antibody should be determined by the researcher.

Immunogen

A synthetic peptide specific to human CYP2E1 was used as the immunogen for the Cytochrome P450 2E1 antibody.

Storage

Store the Cytochrome P450 2E1 antibody at -20oC.