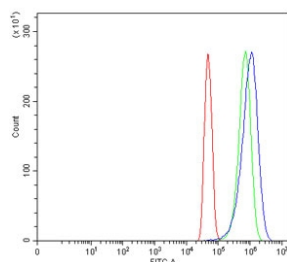


## CYP8A1 Antibody / PTGIS (RQ6793)

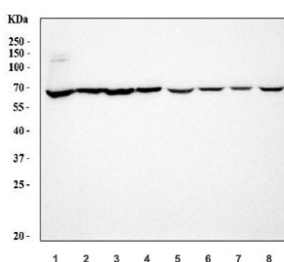
Catalog No.	Formulation	Size
RQ6793	0.5mg/ml if reconstituted with 0.2ml sterile DI water	100 ug

**Bulk quote request**

<b>Availability</b>	1-3 business days
<b>Species Reactivity</b>	Human, Mouse, Rat
<b>Format</b>	Antigen affinity purified
<b>Clonality</b>	Polyclonal (rabbit origin)
<b>Isotype</b>	Rabbit IgG
<b>Purity</b>	Antigen affinity purified
<b>Buffer</b>	Lyophilized from 1X PBS with 2% Trehalose
<b>UniProt</b>	Q16647
<b>Applications</b>	Western Blot : 1-2ug/ml Flow Cytometry : 1-3ug/million cells Direct ELISA : 0.1-0.5ug/ml
<b>Limitations</b>	This CYP8A1 antibody is available for research use only.



Flow cytometry testing of human U-251 cells with CYP8A1 antibody at 1ug/million cells (blocked with goat sera); Red=cells alone, Green=isotype control, Blue= CYP8A1 antibody.



Western blot testing of 1) human 293T, 2) human SK-O-V3, 3) human HeLa, 4) human SiHa, 5) rat ovary, 6) rat heart, 7) mouse ovary and 8) mouse heart tissue lysate with CYP8A1 antibody. Expected molecular weight: ~57 kDa.

## Description

Prostaglandin-I synthase (EC 5.3.99.4) also known as prostaglandin I<sub>2</sub> (prostacyclin) synthase (PTGIS) or CYP8A1 is an enzyme involved in prostanoid biosynthesis that in humans is encoded by the PTGIS gene. This gene encodes a member of the cytochrome P450 superfamily of enzymes. The cytochrome P450 proteins are monooxygenases which catalyze many reactions involved in drug metabolism and synthesis of cholesterol, steroids and other lipids. However, this protein is considered a member of the cytochrome P450 superfamily on the basis of sequence similarity rather than functional similarity. This endoplasmic reticulum membrane protein catalyzes the conversion of prostaglandin H<sub>2</sub> to prostacyclin (prostaglandin I<sub>2</sub>), a potent vasodilator and inhibitor of platelet aggregation. An imbalance of prostacyclin and its physiological antagonist thromboxane A<sub>2</sub> contribute to the development of myocardial infarction, stroke, and atherosclerosis.

## Application Notes

Optimal dilution of the CYP8A1 antibody should be determined by the researcher.

## Immunogen

Recombinant human protein (amino acids D119-D470) was used as the immunogen for the CYP8A1 antibody.

## Storage

After reconstitution, the CYP8A1 antibody can be stored for up to one month at 4°C. For long-term, aliquot and store at -20°C. Avoid repeated freezing and thawing.