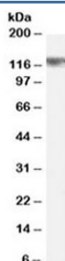


Cyld Antibody (R33641)

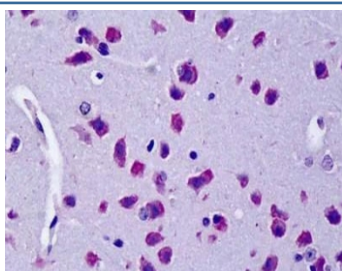
Catalog No.	Formulation	Size
R33641-100UG	0.5 mg/ml in 1X TBS, pH7.3, with 0.5% BSA (US sourced) and 0.02% sodium azide	100 ug

[Bulk quote request](#)

Availability	1-3 business days
Species Reactivity	Mouse, Rat
Format	Antigen affinity purified
Clonality	Polyclonal (goat origin)
Isotype	Goat Ig
Purity	Antigen affinity
Gene ID	74256
Localization	Cytoplasmic
Applications	Western Blot : 0.5-1.5ug/ml IHC (FFPE) : 5ug/ml ELISA (peptide) LOD : 1:32000
Limitations	This Cyld antibody is available for research use only.



Western blot testing of rat brain lysate with Cyld antibody at 0.5ug/ml. Predicted molecular weight ~107 kDa, observed here at ~125 kDa.



IHC testing of FFPE mouse brain tissue with Cyld antibody at 5ug/ml. Required HIER: steamed antigen retrieval with pH6 citrate buffer; AP-staining.

Description

Additional name(s) for this target protein: Cylindromatosis

Application Notes

Optimal dilution of the Cyld antibody should be determined by the researcher.

Immunogen

Amino acids DSQQSKSKNPWYIDE were used as the immunogen for this Cyld antibody.

Storage

Aliquot and store the Cyld antibody at -20oC.