

Cyclin dependent kinase 9 Antibody / CDK9 [clone GIH-3] (RQ8891)

Catalog No.	Formulation	Size
RQ8891	Antibody in PBS with 0.02% sodium azide, 50% glycerol and 0.4-0.5mg/ml BSA	100 ul

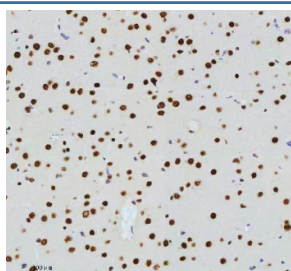
Recombinant **RABBIT MONOCLONAL**

[Bulk quote request](#)

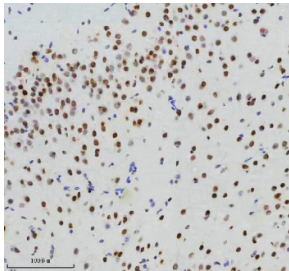
Availability	1-3 days
Species Reactivity	Human, Mouse, Rat
Format	Purified
Clonality	Recombinant Rabbit Monoclonal
Isotype	Rabbit IgG
Clone Name	GIH-3
Purity	Affinity chromatography
UniProt	P50750
Localization	Nucleus, Cytoplasm
Applications	Western Blot : 1:500 Immunohistochemistry (FFPE) : 1:50
Limitations	This Cyclin dependent kinase 9 antibody is available for research use only.



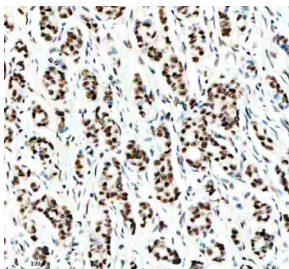
IHC staining of FFPE rat brain tissue with Cyclin dependent kinase 9 antibody, HRP-secondary and DAB substrate. HIER: boil tissue sections in pH8 EDTA for 20 min and allow to cool before testing.



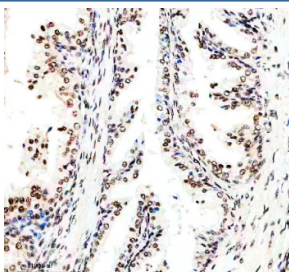
IHC staining of FFPE rat brain tissue with Cyclin dependent kinase 9 antibody, HRP-secondary and DAB substrate. HIER: boil tissue sections in pH8 EDTA for 20 min and allow to cool before testing.



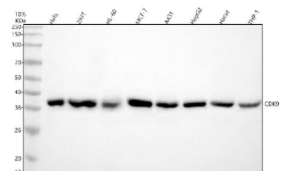
IHC staining of FFPE mouse brain tissue with Cyclin dependent kinase 9 antibody, HRP-secondary and DAB substrate. HIER: boil tissue sections in pH8 EDTA for 20 min and allow to cool before testing.



IHC staining of FFPE human breast cancer tissue with Cyclin dependent kinase 9 antibody, HRP-secondary and DAB substrate. HIER: boil tissue sections in pH8 EDTA for 20 min and allow to cool before testing.



IHC staining of FFPE human prostate cancer tissue with Cyclin dependent kinase 9 antibody, HRP-secondary and DAB substrate. HIER: boil tissue sections in pH8 EDTA for 20 min and allow to cool before testing.



Western blot testing of human 1) HeLa, 2) 293T, 3) HL60, 4) MCF7, 5) A431, 6) HepG2, 7) HaCaT and 8) ThP-1 cell lysate with Cyclin dependent kinase 9 antibody. Predicted molecular weight ~43 kDa.