

Cyclin D1 Antibody PE Conjugate [clone SPM587] (V2830PE)

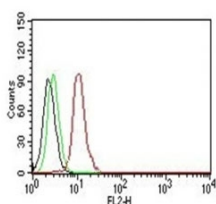
Catalog No.	Formulation	Size
V2830PE-100T	500 ul at 0.1 mg/ml with 0.1 mg/ml BSA (US sourced), 0.05% sodium azide	100 Tests



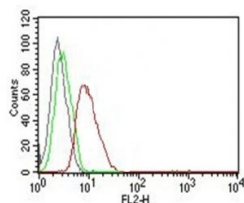
Citations (1)

[Bulk quote request](#)

Availability	1-3 business days
Species Reactivity	Human
Format	PE Conjugate
Clonality	Monoclonal (mouse origin)
Isotype	Mouse IgG2a, kappa
Clone Name	SPM587
Purity	Protein G affinity chromatography
UniProt	P24385
Localization	Nuclear
Applications	Flow Cytometry : 5ul per test per one million cells in 100ul
Limitations	This Cyclin D1 antibody is available for research use only.



Flow Cytometry testing of Jurkat cells. Black: cells alone; Green: isotype control; Red: PE-labeled Cyclin D1 antibody (SPM587).



Flow Cytometry testing of MCF-7 cells. Black: cells alone; Green: isotype control; Red: PE-labeled Cyclin D1 antibody (SPM587).

Description

Cyclin D1, one of the key cell cycle regulators, is a putative proto-oncogene overexpressed in a wide variety of human neoplasms. This antibody neutralizes the activity of cyclin D1 in vivo. About 60% of mantle cell lymphomas (MCL) contain a t(11; 14)(q13; q32) translocation resulting in over-expression of cyclin D1. This antibody is useful in identifying mantle cell lymphomas (cyclin D1 positive) from CLL/SLL and follicular lymphomas (cyclin D1 negative). Occasionally, hairy cell leukemia and plasma cell myeloma weakly express Cyclin D1.

Application Notes

Optimal dilution of the Cyclin D1 antibody should be determined by the researcher.

Immunogen

Human recombinant full length protein was used as the immunogen for the Cyclin D1 antibody.

Storage

Store the Cyclin D1 antibody at 2-8°C. Conjugate is light sensitive, store in the dark.