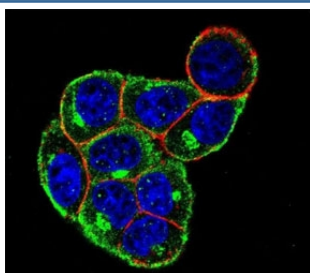


## Cyclin D Antibody / CCND1 (F49118)

Catalog No.	Formulation	Size
F49118-0.4ML	In 1X PBS, pH 7.4, with 0.09% sodium azide	0.4 ml
F49118-0.08ML	In 1X PBS, pH 7.4, with 0.09% sodium azide	0.08 ml

**Bulk quote request**

<b>Availability</b>	1-3 business days
<b>Species Reactivity</b>	Human
<b>Format</b>	Antigen affinity purified
<b>Clonality</b>	Polyclonal (rabbit origin)
<b>Isotype</b>	Rabbit Ig
<b>Purity</b>	Antigen affinity
<b>UniProt</b>	P24385
<b>Applications</b>	Western Blot : 1:1000 Immunofluorescence : 1:10-1:50
<b>Limitations</b>	This Cyclin D antibody is available for research use only.



Confocal immunofluorescent analysis of Cyclin D antibody with HeLa cells followed by Alexa Fluor 488-conjugated goat anti-rabbit IgG (green). Actin filaments have been labeled with Alexa Fluor 555 Phalloidin (red). DAPI was used as a nuclear counterstain (blue).



Cyclin D antibody western blot analysis in HepG2 lysate. Predicted molecular weight: 32-36 kDa.

## Description

CCND1 belongs to the highly conserved cyclin family, whose members are characterized by a dramatic periodicity in protein abundance throughout the cell cycle. Cyclins function as regulators of CDK kinases. Different cyclins exhibit distinct expression and degradation patterns which contribute to the temporal coordination of each mitotic event. This cyclin forms a complex with and functions as a regulatory subunit of CDK4 or CDK6, whose activity is required for cell cycle G1/S transition. This protein has been shown to interact with tumor suppressor protein Rb and the expression of this gene is regulated positively by Rb.

## Application Notes

Titration of the Cyclin D antibody may be required due to differences in protocols and secondary/substrate sensitivity.

## Immunogen

A portion of amino acids 203-238 from the human protein was used as the immunogen for this Cyclin D antibody.

## Storage

Aliquot the Cyclin D antibody and store frozen at -20oC or colder. Avoid repeated freeze-thaw cycles.