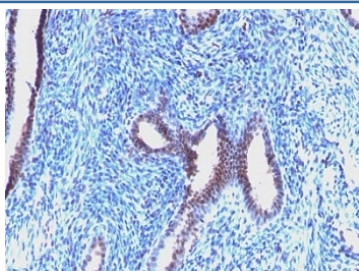


Cyclin B1 Antibody / CCNB1 [clone CCNB1/1098] (V2946)

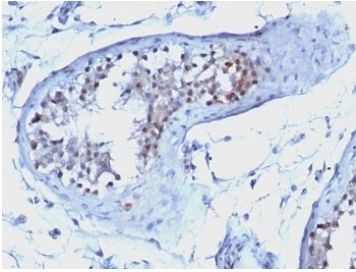
Catalog No.	Formulation	Size
V2946-100UG	0.2 mg/ml in 1X PBS with 0.1 mg/ml BSA (US sourced) and 0.05% sodium azide	100 ug
V2946-20UG	0.2 mg/ml in 1X PBS with 0.1 mg/ml BSA (US sourced) and 0.05% sodium azide	20 ug
V2946SAF-100UG	1 mg/ml in 1X PBS; BSA free, sodium azide free	100 ug
V2946IHC-7ML	Prediluted in 1X PBS with 0.1 mg/ml BSA (US sourced) and 0.05% sodium azide; *For IHC use only*	7 ml

Bulk quote request

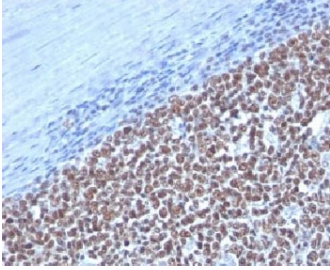
Availability	1-3 business days
Species Reactivity	Human
Format	Purified
Clonality	Monoclonal (mouse origin)
Isotype	Mouse IgG1, kappa
Clone Name	CCNB1/1098
Purity	Protein G affinity chromatography
UniProt	P14635
Localization	Cytoplasmic & nuclear
Applications	Immunofluorescence : 1-2ug/ml Immunohistochemistry (FFPE) : 1-2ug/ml for 30 min at RT
Limitations	This Cyclin B1 antibody is available for research use only.



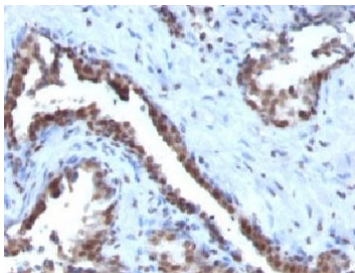
IHC: Formalin-fixed, paraffin-embedded human endometrial carcinoma stained with Cyclin B1 antibody (CCNB1/1098).



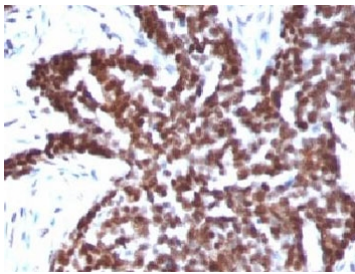
IHC: Formalin-fixed, paraffin-embedded human testicular carcinoma stained with Cyclin B1 antibody.



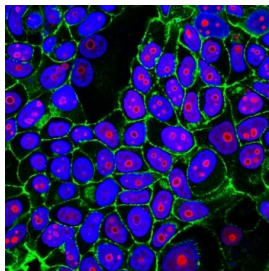
IHC: Formalin-fixed, paraffin-embedded human tonsil stained with Cyclin B1 antibody.



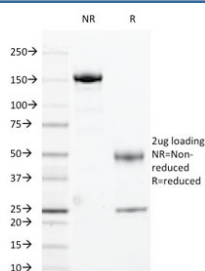
IHC: Formalin-fixed, paraffin-embedded human prostate carcinoma stained with Cyclin B1 antibody.



IHC: Formalin-fixed, paraffin-embedded human ovarian carcinoma stained with Cyclin B1 antibody.



Immunofluorescent staining of human MCF7 cells with Cyclin B1 antibody (clone CCNB1/1098, red), phalloidin (actin, green) and Hoechst (nuclei, blue).



SDS-PAGE analysis of purified, BSA-free Cyclin B1 antibody (clone CCNB1/1098) as confirmation of integrity and purity.

Description

Cyclin B1 antibody clone CCNB1/1098 is a monoclonal antibody that detects cyclin B1, a regulatory protein essential for cell cycle progression. Cyclin B1 partners with cyclin-dependent kinase 1 (CDK1) to form the maturation promoting factor, which drives cells from G2 phase into mitosis. This tight regulation ensures accurate chromosome segregation and genomic stability. NSJ Bioreagents provides this antibody for oncology, cell cycle research, and molecular biology studies.

The antibody produces strong cytoplasmic and nuclear staining in proliferating cells, with expression peaking during G2/M transition. In pathology, cyclin B1 is frequently overexpressed in tumors such as breast, lung, and colorectal cancers. Detecting this protein provides insights into tumor aggressiveness and proliferation status.

In oncology, cyclin B1 antibody clone CCNB1/1098 has been used to explore dysregulated cell cycle pathways in malignancy. Overexpression of cyclin B1 often correlates with poor prognosis, making it a valuable biomarker in cancer research. Its detection supports studies into therapeutic interventions that target mitotic control.

In basic biology, cyclin B1 detection helps chart cell cycle checkpoints, DNA repair mechanisms, and responses to genotoxic stress. The antibody is widely employed in models investigating how cells maintain genomic stability and prevent uncontrolled division.

In drug discovery, cyclin B1 is studied as a target for anti-proliferative therapies. The antibody has been applied in preclinical systems to assess the impact of CDK inhibitors and other agents designed to arrest mitotic progression.

Validated in tissue-based and cell-based assays, the antibody provides reproducible detection with minimal background. Alternate names include CCNB1 antibody, mitotic cyclin B1 antibody, and G2/M regulatory protein antibody.

Application Notes

Optimal dilution of the Cyclin B1 antibody should be determined by the researcher.

1. Staining of formalin-fixed tissues requires boiling tissue sections in 10mM Citrate buffer, pH 6.0, for 10-20 min followed by cooling at RT for 20 min.
2. The prediluted format is supplied in a dropper bottle and is optimized for use in IHC. After epitope retrieval step (if required), drip mAb solution onto the tissue section and incubate at RT for 30 min.

Immunogen

Recombinant human full-length protein was used as the immunogen for the Cyclin B1 antibody.

Storage

Store the Cyclin B1 antibody at 2-8oC (with azide) or aliquot and store at -20oC or colder (without azide).