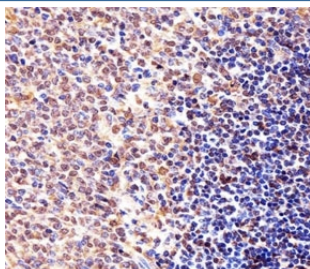


Cyclin B1 Antibody (CCNB1) (F52189)

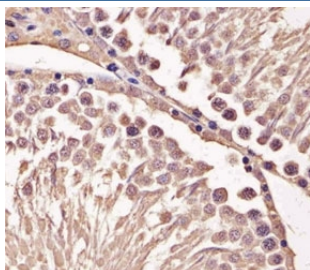
Catalog No.	Formulation	Size
F52189-0.4ML	In 1X PBS, pH 7.4, with 0.09% sodium azide	0.4 ml
F52189-0.08ML	In 1X PBS, pH 7.4, with 0.09% sodium azide	0.08 ml

[Bulk quote request](#)

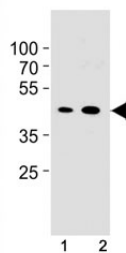
Availability	1-3 business days
Species Reactivity	Mouse
Predicted Reactivity	Hamster
Format	Antigen affinity purified
Clonality	Polyclonal (rabbit origin)
Isotype	Rabbit Ig
Purity	Antigen affinity
UniProt	P24860
Localization	Nuclear, cytoplasmic
Applications	IHC (Paraffin) : 1:25 Western Blot : 1:1000
Limitations	This Cyclin B1 antibody is available for research use only.



Immunohistochemical analysis of paraffin-embedded mouse spleen section using Cyclin B1 antibody. Ab was diluted at 1:25 dilution.



IHC analysis of FFPE mouse testis section using Cyclin B1 antibody; Ab was diluted at 1:25.



Cyclin B1 antibody western blot analysis in NIH3T3 cell line and mouse spleen tissue lysate. Predicted molecular weight: 48-60 kDa

Description

Essential for the control of the cell cycle at the G2/M (mitosis) transition. [UniProt]

Application Notes

Titration of the Cyclin B1 antibody may be required due to differences in protocols and secondary/substrate sensitivity.

Immunogen

A portion of amino acids 103-130 from the mouse protein was used as the immunogen for this Cyclin B1 antibody.

Storage

Aliquot the Cyclin B1 antibody and store frozen at -20oC or colder. Avoid repeated freeze-thaw cycles.