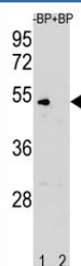


## Cyclin B Antibody (CCNB1) (F52188)

Catalog No.	Formulation	Size
F52188-0.4ML	In 1X PBS, pH 7.4, with 0.09% sodium azide	0.4 ml
F52188-0.08ML	In 1X PBS, pH 7.4, with 0.09% sodium azide	0.08 ml

[Bulk quote request](#)

<b>Availability</b>	1-3 business days
<b>Species Reactivity</b>	Human
<b>Format</b>	Antigen affinity purified
<b>Clonality</b>	Polyclonal (rabbit origin)
<b>Isotype</b>	Rabbit Ig
<b>Purity</b>	Antigen affinity
<b>UniProt</b>	P14635
<b>Localization</b>	Nuclear, cytoplasmic
<b>Applications</b>	Western Blot : 1:1000
<b>Limitations</b>	This Cyclin B antibody is available for research use only.



Western blot analysis of Cyclin B antibody pre-incubated without (Lane 1) and with (2) blocking peptide in K562 lysate. Predicted molecular weight: 48-60 kDa

## Description

Essential for the control of the cell cycle at the G2/M (mitosis) transition. [UniProt]

## Application Notes

Titration of the Cyclin B antibody may be required due to differences in protocols and secondary/substrate sensitivity.

## Immunogen

A portion of amino acids 1-30 from the human protein was used as the immunogen for this Cyclin B antibody.

## Storage

Aliquot the Cyclin B antibody and store frozen at -20°C or colder. Avoid repeated freeze-thaw cycles.