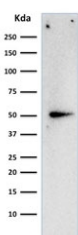


Cyclin A2 Antibody [clone E67] (V2023)

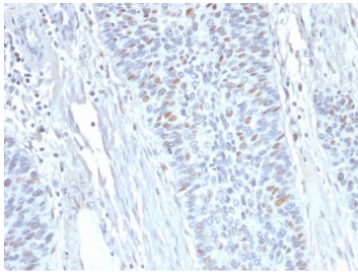
Catalog No.	Formulation	Size
V2023-100UG	0.2 mg/ml in 1X PBS with 0.1 mg/ml BSA (US sourced) and 0.05% sodium azide	100 ug
V2023-20UG	0.2 mg/ml in 1X PBS with 0.1 mg/ml BSA (US sourced) and 0.05% sodium azide	20 ug
V2023SAF-100UG	1 mg/ml in 1X PBS; BSA free, sodium azide free	100 ug

[Bulk quote request](#)

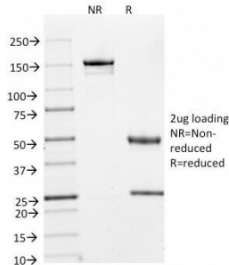
Availability	1-3 business days
Species Reactivity	Human, Mouse
Format	Purified
Clonality	Monoclonal (mouse origin)
Isotype	Mouse IgG2a, kappa
Clone Name	E67
Purity	Protein G affinity chromatography
Buffer	1X PBS, pH 7.4
Gene ID	890
Localization	Predominantly nuclear
Applications	Flow Cytometry : 0.5-1ug/10 ⁶ cells Immunofluorescence : 1-2ug/ml Immunohistochemistry (FFPE) : 1-2ug/ml for 30 min at RT
Limitations	This Cyclin A2 antibody is available for research use only.



Western blot testing of human HeLa cell lysate with Cyclin A2 antibody. Expected molecular weight ~49 kDa.



IHC staining of FFPE human endometrium with Cyclin A2 antibody (clone E67). HIER: boil tissue sections in pH 9 10mM Tris with 1mM EDTA for 20 min and allow to cool before testing.



SDS-PAGE Analysis of Purified, BSA-Free Cyclin A2 Antibody (clone E67). Confirmation of Integrity and Purity of the Antibody.

Description

This antibody recognizes a protein of 50-55 kDa, which is identified as Cyclin A. Its epitope is located amino acids 144-148 of the human protein. Cyclins are regulatory subunits of the cyclin-dependent kinases (cdk's) and they control transition at different specific phases of the cell cycle. The temporal expression of cyclins is tightly regulated and subsequently plays a critical role in controlling the enzymatic activity of cdk's. These cyclin/cdk complexes are essential for passage through specific stages in the cell cycle. In mammalian somatic cells, Cyclin A is required for S-phase and passage through G2-phase. The D and E type cyclins regulate the passage of G1, while Cyclin B is a critical regulator of mitosis. Mutation or disruption of normal Cyclin A expression causes cells to arrest in G2-phase.

Application Notes

The concentration stated for each application is a general starting point. Variations in protocols, secondaries and substrates may require the Cyclin A2 antibody to be titrated up or down for optimal performance.

Immunogen

Full length bovine protein was used as the immunogen for this CCNA2 antibody. The epitope has been localized to amino acids 144-148 of the human protein.

Storage

Store the Cyclin A2 antibody at 2-8°C (with azide) or aliquot and store at -20°C or colder (without azide).

References (1)