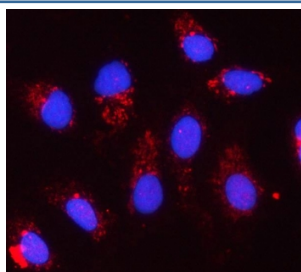


CYC1 Antibody / Cytochrome C1 (RQ8117)

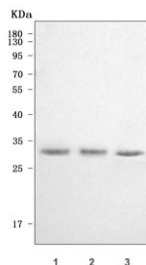
Catalog No.	Formulation	Size
RQ8117	0.5mg/ml if reconstituted with 0.2ml sterile DI water	100 ug

Bulk quote request

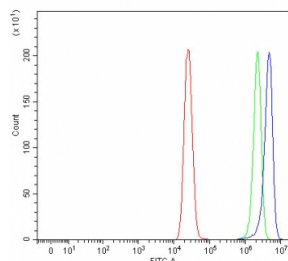
Availability	1-3 business days
Species Reactivity	Human
Format	Antigen affinity purified
Clonality	Polyclonal (rabbit origin)
Isotype	Rabbit IgG
Purity	Antigen affinity purified
Buffer	Lyophilized from 1X PBS with 2% Trehalose
UniProt	P08574
Localization	Cytoplasmic
Applications	Western Blot : 0.5-1ug/ml Immunofluorescence : 5ug/ml Flow Cytometry : 1-3ug/million cells Direct ELISA : 0.1-0.5ug/ml
Limitations	This CYC1 antibody is available for research use only.



Immunofluorescent staining of FFPE human A549 cells with CYC1 antibody (red) and DAPI nuclear stain (blue). HIER: steam section in pH6 citrate buffer for 20 min.



Western blot testing of human 1) A431, 2) HeLa and 3) MCF7 cell lysate with CYC1 antibody. Predicted molecular weight ~35 kDa.



Flow cytometry testing of fixed and permeabilized human MCF7 cells with CYC1 antibody at 1ug/million cells (blocked with goat sera); Red=cells alone, Green=isotype control, Blue= CYC1 antibody.

Description

Cytochrome c1, heme protein, mitochondrial (CYC1), also known as UQCR4, MC3DN6, Complex III subunit 4, Cytochrome b-c1 complex subunit 4, or Ubiquinol-cytochrome-c reductase complex cytochrome c1 subunit is a protein that in humans is encoded by the CYC1 gene. This gene encodes a subunit of the cytochrome bc1 complex, which plays an important role in the mitochondrial respiratory chain by transferring electrons from the Rieske iron-sulfur protein to cytochrome c. Mutations in this gene may cause mitochondrial complex III deficiency, nuclear type 6.

Application Notes

Optimal dilution of the CYC1 antibody should be determined by the researcher.

Immunogen

E. coli-derived recombinant human protein (amino acids S85-K325) was used as the immunogen for the CYC1 antibody.

Storage

After reconstitution, the CYC1 antibody can be stored for up to one month at 4oC. For long-term, aliquot and store at -20oC. Avoid repeated freezing and thawing.