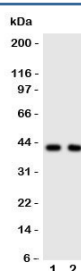


## CXCR5 Antibody / BLR1 / MDR15 (R31129)

Catalog No.	Formulation	Size
R31129	0.5mg/ml if reconstituted with 0.2ml sterile DI water	100 ug

**Bulk quote request**

<b>Availability</b>	1-3 business days
<b>Species Reactivity</b>	Human, Mouse, Rat
<b>Format</b>	Antigen affinity purified
<b>Clonality</b>	Polyclonal (rabbit origin)
<b>Isotype</b>	Rabbit IgG
<b>Purity</b>	Antigen affinity
<b>Buffer</b>	Lyophilized from 1X PBS with 2.5% BSA and 0.025% sodium azide/thimerosal
<b>UniProt</b>	P32302
<b>Applications</b>	Western Blot : 0.5-1ug/ml
<b>Limitations</b>	This CXCR5 antibody is available for research use only.



Western blot testing of CXCR5 antibody and Lane 1: rat spleen; 2: human HeLa cell lysate. Predicted molecular weight ~43 kDa.

## Description

Chemokine CXC Motif Receptor 5, also known as BLR1 and MDR15, is a G protein-coupled seven transmembrane receptor for chemokine CXCL13 (also known as BLC) and belongs to the CXC chemokine receptor family. In humans, the protein is encoded by the CXCR5 gene. The gene plays an essential role in B cell migration. Reif et al.(2002) concluded that their findings defined the mechanism of B-cell relocalization in response to antigen, and established that cell position in vivo can be determined by the balance of responsiveness to chemoattractants made in separate but adjacent zones. Chan et al.(2003) investigated the expression of chemokines and chemokine receptors in eyes with primary intraocular B-cell lymphoma(PIOL).

## Application Notes

The stated application concentrations are suggested starting amounts. Titration of the CXCR5 antibody may be required due to differences in protocols and secondary/substrate sensitivity.

## Immunogen

An amino acid sequence from the C-terminus of human Chemokine CXC Motif Receptor 5 (SSLSESENATSLTTF) was used as the immunogen for this CXCR5 antibody (100% homologous in human, mouse and rat).

## Storage

After reconstitution, the CXCR5 antibody can be stored for up to one month at 4°C. For long-term, aliquot and store at -20°C. Avoid repeated freezing and thawing.