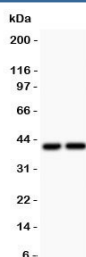


## CXCR3 Antibody (R31506)

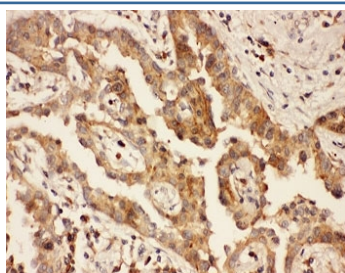
Catalog No.	Formulation	Size
R31506	0.5mg/ml if reconstituted with 0.2ml sterile DI water	100 ug

**Bulk quote request**

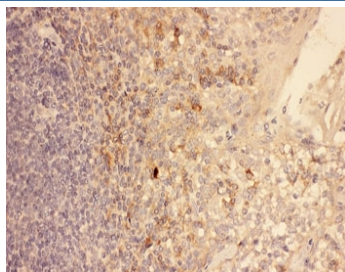
<b>Availability</b>	1-3 business days
<b>Species Reactivity</b>	Human, Rat
<b>Format</b>	Antigen affinity purified
<b>Clonality</b>	Polyclonal (rabbit origin)
<b>Isotype</b>	Rabbit IgG
<b>Purity</b>	Antigen affinity
<b>Buffer</b>	Lyophilized from 1X PBS with 2.5% BSA and 0.025% sodium azide
<b>Gene ID</b>	2833
<b>Applications</b>	Western Blot : 0.5-1ug/ml IHC (FFPE) : 0.5-1ug/ml
<b>Limitations</b>	This CXCR3 antibody is available for research use only.



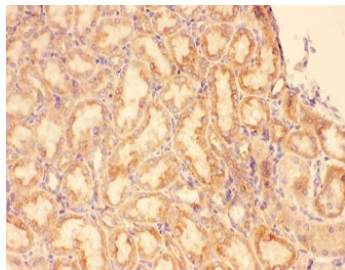
Western blot testing of CXCR3 antibody and Lane 1: COLO320; 2: SGC lysate.  
Predicted molecular weight ~41 kDa.



IHC-P: CXCR3 antibody testing of human lung cancer tissue



IHC-P: CXCR3 antibody testing of human tonsil tissue



IHC-P: CXCR3 antibody testing of rat kidney tissue

## Description

CXCR3 is a G<sub>α</sub> protein-coupled receptor in the CXC chemokine receptor family. Other names for CXCR3 are G protein-coupled receptor 9 (GPR9) and CD183. CXCR3 is expressed on malignant B cells from chronic lymphoproliferative disorders, particularly in patients with CLL, and represents a fully functional receptor involved in chemotaxis of malignant B lymphocytes. It is found that in the absence of known etiologic agents, CXCR3 represents a novel target for therapeutic interference early in type 1 diabetes. Signaling is associated with MG pathogenesis and CXCR3 may serve as novel drug targets to treat MG. CXCR3A and CXCR3B are involved in the chemotactic and vascular effects of CXCL4L1.

## Application Notes

The stated application concentrations are suggested starting amounts. Titration of the CXCR3 antibody may be required due to differences in protocols and secondary/substrate sensitivity.

## Immunogen

Human partial recombinant protein (AA 1-368) was used as the immunogen for this CXCR3 antibody.

## Storage

After reconstitution, the CXCR3 antibody can be stored for up to one month at 4°C. For long-term, aliquot and store at -20°C. Avoid repeated freezing and thawing.