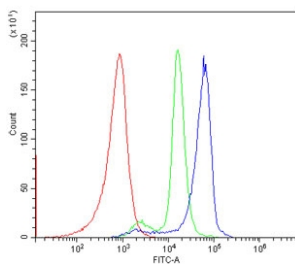


## CXCR2 Antibody (RQ5688)

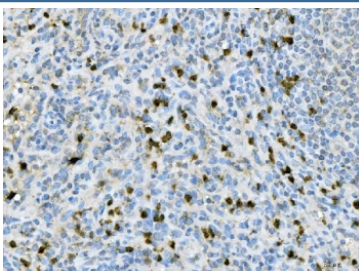
Catalog No.	Formulation	Size
RQ5688	0.5mg/ml if reconstituted with 0.2ml sterile DI water	100 ug

**Bulk quote request**

<b>Availability</b>	1-3 business days
<b>Species Reactivity</b>	Human
<b>Format</b>	Antigen affinity purified
<b>Clonality</b>	Polyclonal (rabbit origin)
<b>Isotype</b>	Rabbit IgG
<b>Purity</b>	Affinity purified
<b>Buffer</b>	Lyophilized from 1X PBS with 2% Trehalose
<b>UniProt</b>	P25025
<b>Applications</b>	Immunohistochemistry : 1-2ug/ml Flow Cytometry : 1-3ug/million cells
<b>Limitations</b>	This CXCR2 antibody is available for research use only.



Flow cytometry testing of human PBM cells with CXCR2 antibody at 1ug/million cells (blocked with goat sera); Red=cells alone, Green=isotype control, Blue= CXCR2 antibody.



IHC staining of FFPE human spleen tissue with CXCR2 antibody. HIER: boil tissue sections in pH8 EDTA for 20 min and allow to cool before testing.

## Description

CXCR2 is a receptor for Interleukin 8, which is a powerful neutrophil chemotactic factor. It is a member of the GPCR family (subfamily, chemokine). Binding of IL8 to the receptor causes activation of neutrophils. This response is mediated via a G-protein that activate a phosphatidylinositol-calcium second messenger system. This receptor binds to IL8 with a high affinity and to GRO/MGSA and NAP2 also with a high affinity. It has been reported to be expressed in a wide variety of tissues. ESTs have been isolated from human placenta and thymus libraries.

## Application Notes

Optimal dilution of the CXCR2 antibody should be determined by the researcher.

## Immunogen

Amino acids TLPPFLLDAAPCEPESLEINK from the human protein were used as the immunogen for the CXCR2 antibody.

## Storage

After reconstitution, the CXCR2 antibody can be stored for up to one month at 4oC. For long-term, aliquot and store at -20oC. Avoid repeated freezing and thawing.