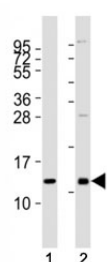


CXCL12 Antibody / SDF1 (F53393)

Catalog No.	Formulation	Size
F53393-0.4ML	In 1X PBS, pH 7.4, with 0.09% sodium azide	0.4 ml
F53393-0.08ML	In 1X PBS, pH 7.4, with 0.09% sodium azide	0.08 ml

Bulk quote request

Availability	1-3 business days
Species Reactivity	Human, Mouse
Format	Antigen affinity purified
Clonality	Polyclonal (rabbit origin)
Isotype	Rabbit Ig
Purity	Antigen affinity
UniProt	P48061
Applications	Western Blot : 1:2000
Limitations	This CXCL12 antibody is available for research use only.



Western blot testing of CXCL12 antibody at 1:2000 dilution. Lane 1: human heart lysate; 2: mouse kidney lysate; Predicted molecular weight: 9-12 kDa.

Description

CXCL12 is a chemoattractant active on T-lymphocytes, monocytes, but not neutrophils. Activates the C-X-C chemokine receptor CXCR4 to induce a rapid and transient rise in the level of intracellular calcium ions and chemotaxis. [UniProt]

Application Notes

The stated application concentrations are suggested starting amounts. Titration of the CXCL12 antibody may be required due to differences in protocols and secondary/substrate sensitivity.

Immunogen

This CXCL12 antibody was produced from a rabbit immunized with a recombinant protein.

Storage

Store at 4oC for up to one month. For long term, aliquot the CXCL12 antibody and store frozen at -20oC or colder. Avoid repeated freeze-thaw cycles.