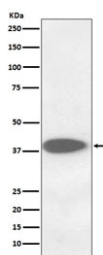


## CTSB Antibody / Cathepsin B [clone AAFO-3] (RQ5186)

Catalog No.	Formulation	Size
RQ5186	Antibody in PBS with 0.02% sodium azide, 50% glycerol and 0.4-0.5mg/ml BSA	100 ul

[Bulk quote request](#)

Availability	1-2 weeks
Species Reactivity	Human
Format	Purified
Clonality	Rabbit Monoclonal
Isotype	Rabbit IgG
Clone Name	AAFO-3
Purity	Affinity purified
UniProt	P07858
Applications	Western Blot : 1:500-1:2000
Limitations	This CTSB antibody is available for research use only.



Western blot testing of human A375 cell lysate with CTSB antibody. Molecular weight: 38-46 kDa depending on glycosylation level. An ~31 kDa form (propeptide removed) may be observed and may be further processed into an ~25 kDa heavy chain and ~5 kDa light chain.

## Description

The CTSB gene encodes a member of the C1 family of peptidases. Alternative splicing of this gene results in multiple transcript variants. At least one of these variants encodes a preproprotein that is proteolytically processed to generate multiple protein products. These products include the cathepsin B light and heavy chains, which can dimerize to form the double chain form of the enzyme. This enzyme is a lysosomal cysteine protease with both endopeptidase and exopeptidase activity that may play a role in protein turnover. It is also known as amyloid precursor protein secretase and is involved in the proteolytic processing of amyloid precursor protein (APP). Incomplete proteolytic processing of APP has been suggested to be a causative factor in Alzheimer's disease, the most common cause of dementia. Overexpression of

the encoded protein has been associated with esophageal adenocarcinoma and other tumors. [RefSeq]

## **Application Notes**

Optimal dilution of the CTSB antibody should be determined by the researcher.

## **Immunogen**

A synthetic peptide specific to human Cathepsin B / CTSB was used as the immunogen for the CTSB antibody.

## **Storage**

Store the CTSB antibody at -20oC.