

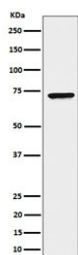
## CTPS1 Antibody / CTP synthase [clone 29C09] (RQ8707)

Catalog No.	Formulation	Size
RQ8707	Antibody in PBS with 0.02% sodium azide, 50% glycerol and 0.4-0.5mg/ml BSA	100 ul

Recombinant RABBIT MONOCLONAL

[Bulk quote request](#)

Availability	1-3 days
Species Reactivity	Human
Format	Purified
Clonality	Recombinant Rabbit Monoclonal
Isotype	Rabbit IgG
Clone Name	29C09
Purity	Affinity chromatography
UniProt	P17812
Applications	Western Blot : 1:500-1:2000
Limitations	This CTPS1 antibody is available for research use only.



Western blot testing of human HeLa cell lysate with CTPS1 antibody. Predicted molecular weight ~67 kDa.

### Description

This enzyme is involved in the de novo synthesis of CTP, a precursor of DNA, RNA and phospholipids. Catalyzes the ATP-dependent amination of UTP to CTP with either L-glutamine or ammonia as a source of nitrogen. This enzyme and its product, CTP, play a crucial role in the proliferation of activated lymphocytes and therefore in immunity. [UniProt]

### Application Notes

Optimal dilution of the CTPS1 antibody should be determined by the researcher.

### Immunogen

A synthetic peptide specific to human CTP synthase protein was used as the immunogen for the CTPS1 antibody.

## **Storage**

Store the CTPS1 antibody at -20oC.