

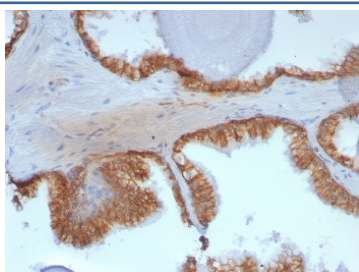
CTNNB1 Antibody / Catenin Beta [clone rCTNNB1/8043] (V4977)

Catalog No.	Formulation	Size
V4977-100UG	0.2 mg/ml in 1X PBS with 0.1 mg/ml BSA (US sourced), 0.05% sodium azide	100 ug
V4977-20UG	0.2 mg/ml in 1X PBS with 0.1 mg/ml BSA (US sourced), 0.05% sodium azide	20 ug
V4977SAF-100UG	1 mg/ml in 1X PBS; BSA free, sodium azide free	100 ug

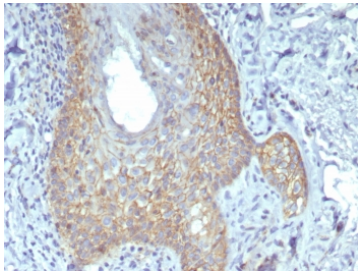
Recombinant **MOUSE MONOCLONAL**

[Bulk quote request](#)

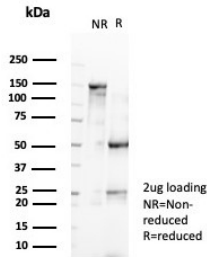
Availability	1-3 business days
Species Reactivity	Human
Format	Purified
Clonality	Recombinant Mouse Monoclonal
Isotype	Mouse IgG1, kappa
Clone Name	rCTNNB1/8043
Purity	Protein A/G affinity
UniProt	P35222
Localization	Cell surface, Cytoplasm
Applications	Immunohistochemistry (FFPE) : 1-2ug/ml for 30 min at RT
Limitations	This CTNNB1 antibody is available for research use only.



IHC staining of FFPE human prostate tissue with CTNNB1 antibody (clone rCTNNB1/8043). HIER: boil tissue sections in pH 9 10mM Tris with 1mM EDTA for 20 min and allow to cool before testing.



IHC staining of FFPE human skin tissue with CTNNB1 antibody (clone rCTNNB1/8043).
HIER: boil tissue sections in pH 9 10mM Tris with 1mM EDTA for 20 min and allow to cool before testing.



SDS-PAGE analysis of purified, BSA-free CTNNB1 antibody (clone rCTNNB1/8043) as confirmation of integrity and purity.

Description

Beta-catenin associates with the cytoplasmic portion of E-cadherin, which is necessary for the function of E-cadherin as an adhesion molecule. In normal tissues, beta-catenin is localized to the membrane of epithelial cells, consistent with its role in the cell adhesion complex.

Application Notes

Optimal dilution of the CTNNB1 antibody should be determined by the researcher.

Immunogen

A recombinant partial protein sequence (within amino acids 1-200) from the human protein was used as the immunogen for the CTNNB1 antibody.

Storage

Aliquot the CTNNB1 antibody and store frozen at -20oC or colder. Avoid repeated freeze-thaw cycles.