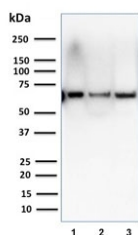


CSTF2T Antibody [clone PCRP-CSTF2T-1A3] (V8957)

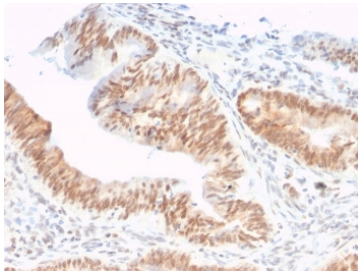
Catalog No.	Formulation	Size
V8957-100UG	0.2 mg/ml in 1X PBS with 0.1 mg/ml BSA (US sourced), 0.05% sodium azide	100 ug
V8957-20UG	0.2 mg/ml in 1X PBS with 0.1 mg/ml BSA (US sourced), 0.05% sodium azide	20 ug
V8957SAF-100UG	1 mg/ml in 1X PBS; BSA free, sodium azide free	100 ug

[Bulk quote request](#)

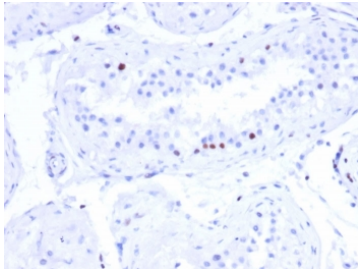
Availability	1-3 business days
Species Reactivity	Human
Format	Purified
Clonality	Monoclonal (mouse origin)
Isotype	Mouse IgG2b, kappa
Clone Name	PCRP-CSTF2T-1A3
Purity	Protein A/G affinity
UniProt	Q9H0L4
Localization	Nucleus
Applications	Flow Cytometry : 1-2ug/million cells Immunofluorescence : 1-2ug/ml Western Blot : 1-2ug/ml Immunohistochemistry (FFPE) : 1-2ug/ml
Limitations	This CSTF2T antibody is available for research use only.



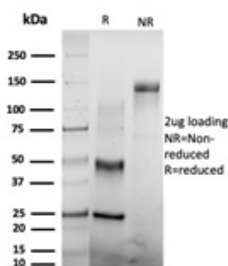
Western blot testing of human 1) T47-D, 2) SK-BR-3 and 3) A375 cell lysate using CSTF2T antibody (clone PCRP-CSTF2T-1A3). Predicted molecular weight ~64 kDa.



IHC staining of FFPE human colon adenocarcinoma tissue with CSTF2T antibody (clone PCR-CSTF2T-1A3). HIER: boil tissue sections in pH 9 10mM Tris with 1mM EDTA for 20 min and allow to cool before testing.

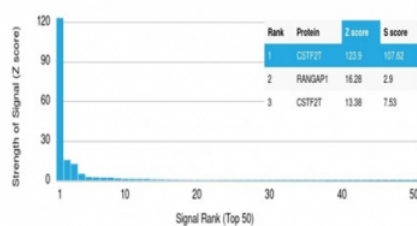


IHC staining of FFPE human testis tissue with CSTF2T antibody (clone PCR-CSTF2T-1A3). HIER: boil tissue sections in pH 9 10mM Tris with 1mM EDTA for 20 min and allow to cool before testing.



SDS-PAGE analysis of purified, BSA-free CSTF2T antibody (PCR-CSTF2T-1A3) as confirmation of integrity and purity.

Human Protein Microarray Specificity Validation



Analysis of HuProt(TM) microarray containing more than 19,000 full-length human proteins using CSTF2T antibody (clone PCR-CSTF2T-1A3). These results demonstrate the foremost specificity of the PCR-CSTF2T-1A3 mAb. Z- and S- score: The Z-score represents the strength of a signal that an antibody (in combination with a fluorescently-tagged anti-IgG secondary Ab) produces when binding to a particular protein on the HuProt(TM) array. Z-scores are described in units of standard deviations (SD's) above the mean value of all signals generated on that array. If the targets on the HuProt(TM) are arranged in descending order of the Z-score, the S-score is the difference (also in units of SD's) between the Z-scores. The S-score therefore represents the relative target specificity of an Ab to its intended target.

Description

The CSTF2T gene encodes the nuclear protein 'Cleavage stimulation factor subunit 2 tau variant' with an RRM (RNA recognition motif) domain. The protein is a member of the cleavage stimulation factor (CSTF) complex that is involved in the 3-untranslated region of mRNAs.

Application Notes

Optimal dilution of the CSTF2T antibody should be determined by the researcher.

Immunogen

Recombinant full-length human CSTF2T protein was used as the immunogen for the CSTF2T antibody.

Storage

Aliquot the CSTF2T antibody and store frozen at -20oC or colder. Avoid repeated freeze-thaw cycles.

