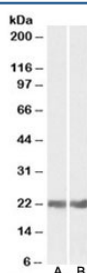


## CRYAB Antibody (R35667)

Catalog No.	Formulation	Size
R35667-100UG	0.5 mg/ml in 1X TBS, pH7.3, with 0.5% BSA (US sourced) and 0.02% sodium azide	100 ug

[Bulk quote request](#)

Availability	1-3 business days
Species Reactivity	Human, Mouse
Predicted Reactivity	Rat
Format	Antigen affinity purified
Clonality	Polyclonal (goat origin)
Isotype	Goat Ig
Purity	Antigen affinity
Gene ID	1410
Applications	Western Blot : 0.01-0.03ug/ml ELISA (peptide) LOD : 1:128000
Limitations	This CRYAB antibody is available for research use only.



Western blot testing of mouse [A] and rat [B] eye lysates with CRYAB antibody at 0.05ug/ml. Predicted molecular weight: ~20 kDa.

## Description

Additional name(s) for this target protein: Crystallin alpha B; Heat-shock 20 kD like-protein

## Application Notes

Optimal dilution of the CRYAB antibody should be determined by the researcher.

## Immunogen

Amino acids RLEKDRFSVNLD were used as the immunogen for this CRYAB antibody.

## Storage

Aliquot and store the CRYAB antibody at -20oC.