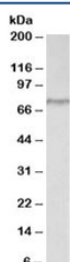


CRTC2 Antibody / TORC2 (R35225)

Catalog No.	Formulation	Size
R35225-100UG	0.5 mg/ml in 1X TBS, pH7.3, with 0.5% BSA (US sourced) and 0.02% sodium azide	100 ug

[Bulk quote request](#)

Availability	1-3 business days
Species Reactivity	Human
Predicted Reactivity	Mouse, Rat, Dog
Format	Antigen affinity purified
Clonality	Polyclonal (goat origin)
Isotype	Goat Ig
Purity	Antigen affinity
Gene ID	74343
Applications	Western Blot : 2-6ug/ml ELISA (peptide) LOD : 1:128000
Limitations	This CRTC2 antibody is available for research use only.



Western blot testing of HeLa lysate with CRTC2 antibody at 2ug/ml. Predicted molecular weight: ~73 kDa.

Description

Additional name(s) for this target protein: CREB regulated transcription coactivator 2, TORC2

Application Notes

Optimal dilution of the CRTC2 antibody should be determined by the researcher.

Immunogen

Amino acids QDPHVLNHQNLTHC were used as the immunogen for this CRTC2 antibody.

Storage

Aliquot and store the CRTC2 antibody at -20oC.