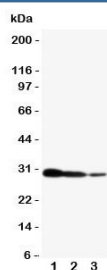


## CRTC2 Antibody / TORC2 (R31094)

Catalog No.	Formulation	Size
R31094	0.5mg/ml if reconstituted with 0.2ml sterile DI water	100 ug

**Bulk quote request**

<b>Availability</b>	1-3 business days
<b>Species Reactivity</b>	Human
<b>Format</b>	Antigen affinity purified
<b>Clonality</b>	Polyclonal (rabbit origin)
<b>Isotype</b>	Rabbit IgG
<b>Purity</b>	Antigen affinity
<b>Buffer</b>	Lyophilized from 1X PBS with 2.5% BSA and 0.025% sodium azide/thimerosal
<b>UniProt</b>	Q53ET0
<b>Applications</b>	Western Blot : 0.5-1ug/ml
<b>Limitations</b>	This CRTC2 antibody is available for research use only.



Western blot testing of CRTC2 antibody and human recombinant protein, 29KD with tag;  
Lane 1:10ng; 2: 5ng; 3: 2.5ng

## Description

CREB-Regulated Transcription Coactivator 2, also known as TORC2, is a protein that in humans is encoded by the CRTC2 gene. The International Radiation Hybrid Mapping Consortium mapped the gene to chromosome 1. By cotransfection of TORC2 and reporter genes in HeLa cells, Iourgenko et al.(2003) found that it potently activated expression of genes driven by the IL8 promoter or a promoter carrying multiple CRE-like sequences. Liu et al.(2008) demonstrated that a fasting-inducible switch, consisting of the histone acetyltransferase p300 and the nutrient-sensing deacetylase sirtuin-1(SIRT1), maintains energy balance in mice through the sequential induction of CRTC2 and FOXO1. Using mice and primary mouse hepatocytes, Wang et al.(2009) found that the protein functioned as a dual sensor for endoplasmic reticulum(ER) stress and fasting signals.

## Application Notes

The stated application concentrations are suggested starting amounts. Titration of the CRTC2 antibody may be required due to differences in protocols and secondary/substrate sensitivity.

## Immunogen

An amino acid sequence from the C-terminus of human CRTC2 (QDPHTFNHQNLTHCSRH) was used as the immunogen for this CRTC2 antibody.

## Storage

After reconstitution, the CRTC2 antibody can be stored for up to one month at 4°C. For long-term, aliquot and store at -20°C. Avoid repeated freezing and thawing.