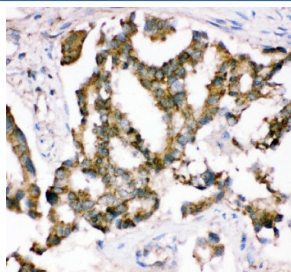


Crk Antibody / Proto-oncogene c-Crk (R31526)

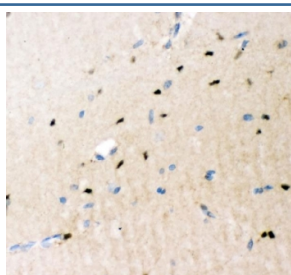
Catalog No.	Formulation	Size
R31526	0.5mg/ml if reconstituted with 0.2ml sterile DI water	100 ug

Bulk quote request

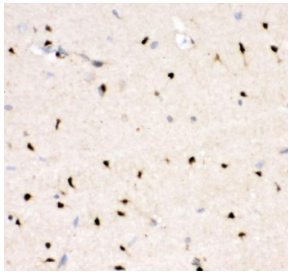
Availability	1-3 business days
Species Reactivity	Human, Mouse, Rat
Format	Antigen affinity purified
Clonality	Polyclonal (rabbit origin)
Isotype	Rabbit IgG
Purity	Antigen affinity
Buffer	Lyophilized from 1X PBS with 2.5% BSA and 0.025% sodium azide
UniProt	P46108
Gene ID	1398
Applications	Western Blot : 0.5-1ug/ml Immunohistochemistry (FFPE) : 2-5ug/ml
Limitations	This Crk antibody is available for research use only.



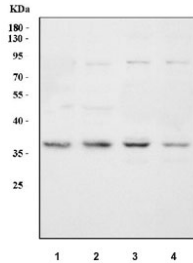
IHC staining of FFPE human lung cancer tissue with Crk antibody. HIER: boil tissue sections in pH8 EDTA for 20 min and allow to cool before testing.



IHC staining of FFPE mouse brain tissue with Crk antibody. HIER: boil tissue sections in pH8 EDTA for 20 min and allow to cool before testing.



IHC staining of FFPE rat brain tissue with Crk antibody. HIER: boil tissue sections in pH8 EDTA for 20 min and allow to cool before testing.



Western blot testing of 1) human 293T, 2) human A549, 3) rat liver and 4) mouse liver tissue lysate with Crk antibody. Expected molecular weight: 34-38 kDa.

Description

CRK, also known as p38, is a protein that in humans is encoded by the CRK gene. This gene is a member of an adapter protein family that binds to several tyrosine-phosphorylated proteins. It is mapped to 17p13.3. The protein participates in the Reelin signaling cascade downstream of DAB1. The product of this gene has several SH2 and SH3 domains (src-homology domains) and is involved in several signaling pathways, recruiting cytoplasmic proteins in the vicinity of tyrosine kinase through SH2-phosphotyrosine interaction. The N-terminal SH2 domain of Crk functions as a positive regulator of transformation whereas the C-terminal SH3 domain functions as a negative regulator of transformation. Two alternative transcripts encoding different isoforms with distinct biological activity have been described.

Application Notes

The stated application concentrations are suggested starting amounts. Titration of the Crk antibody may be required due to differences in protocols and secondary/substrate sensitivity.

Immunogen

Human partial recombinant protein (AA 2-246) was used as the immunogen for this Crk antibody.

Storage

After reconstitution, the Crk antibody can be stored for up to one month at 4°C. For long-term, aliquot and store at -20°C. Avoid repeated freezing and thawing.