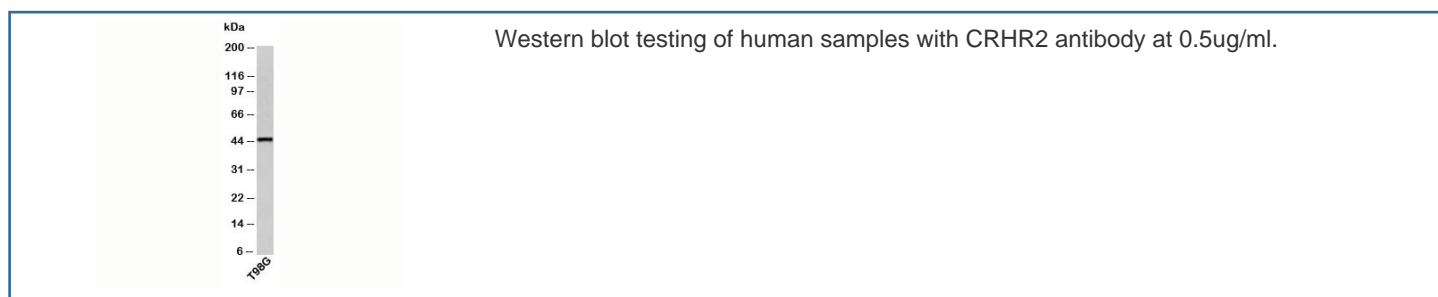


CRHR2 Antibody (N1185)

Catalog No.	Formulation	Size
N1185-100UG	0.5 mg/ml in 1X PBS with 0.1 mg/ml BSA (US sourced), 0.05% sodium azide	100 ug
N1185-25UG	0.5 mg/ml in 1X PBS with 0.1 mg/ml BSA (US sourced), 0.05% sodium azide	25 ug

[Bulk quote request](#)

Species Reactivity	Human, Mouse, Rat
Format	Purified
Clonality	Polyclonal (rabbit origin)
Isotype	Rabbit IgG
Purity	Protein A affinity chromatography
Buffer	1X PBS, pH 7.4
UniProt	Q13324
Gene ID	1395
Localization	Membrane, Secreted
Applications	Western Blot : 0.5-2ug/ml
Limitations	This CRHR2 antibody is available for research use only.



Description

CHCR2, or Corticotropin releasing hormone receptor 2, is a receptor for CRH (corticotropin-releasing hormone), a neurotransmitter secreted by the hypothalamus in response to stress. There are three major isoforms of CHCR2: alpha, beta and gamma, differing in their N-terminus amino acid sequence. Isoform beta and gamma are expressed in the brain, with gamma expression highest in the septum and hippocampus, while alpha is expressed in the peripheral tissues of the brain.

Application Notes

Provided assay concentrations are suggestions only, CRHR2 antibody titration may be required for optimal results.

1. This antibody will detect the alpha (411 AA), beta (438 AA) and gamma (397 AA) isoforms of CRHR2.

Immunogen

A recombinant protein fragment from the N-terminal portion of human CRHR2 was used as the immunogen for this antibody (1).

Storage

Aliquot the CRHR2 antibody and store frozen at -20oC or colder. Avoid repeated freeze-thaw cycles.

Alternate Names

Corticotropin Releasing Factor Receptor 2, Corticotropin Releasing Hormone Receptor 2, CRFR2