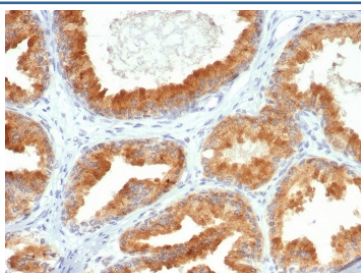


CREB3L4 Antibody / AIBZIP [clone PCRP-CREB3L4-1A3] (V4730)

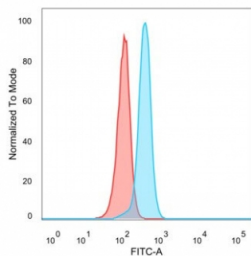
Catalog No.	Formulation	Size
V4730-100UG	0.2 mg/ml in 1X PBS with 0.1 mg/ml BSA (US sourced), 0.05% sodium azide	100 ug
V4730-20UG	0.2 mg/ml in 1X PBS with 0.1 mg/ml BSA (US sourced), 0.05% sodium azide	20 ug
V4730SAF-100UG	1 mg/ml in 1X PBS; BSA free, sodium azide free	100 ug

[Bulk quote request](#)

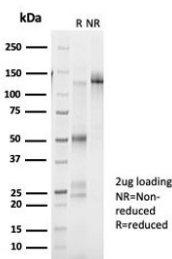
Availability	1-3 business days
Species Reactivity	Human
Format	Purified
Clonality	Monoclonal (mouse origin)
Isotype	Mouse IgG2c, kappa
Clone Name	PCRP-CREB3L4-1A3
Purity	Protein A/G affinity
UniProt	Q8TEY5
Localization	Nucleus
Applications	Flow Cytometry : 1-2ug/million cells Immunofluorescence : 1-2ug/ml Immunohistochemistry (FFPE) : 1-2ug/ml for 30 min at RT
Limitations	This CREB3L4 antibody is available for research use only.



IHC staining of FFPE human prostate cancer tissue with CREB3L4 antibody (clone PCRP-CREB3L4-1A3). HIER: boil tissue sections in pH 9 10mM Tris with 1mM EDTA for 20 min and allow to cool before testing.



Analysis of a HuProt(TM) microarray containing more than 19,000 full-length human proteins using CREB3L4 antibody (clone PCRP-CREB3L4-1A3). Z- and S- Score: The Z-score represents the strength of a signal that a monoclonal antibody (in combination with a fluorescently-tagged anti-IgG secondary antibody) produces when binding to a particular protein on the HuProt(TM) array. Z-scores are described in units of standard deviations (SD's) above the mean value of all signals generated on that array. If targets on HuProt(TM) are arranged in descending order of the Z-score, the S-score is the difference (also in units of SD's) between the Z-score. S-score therefore represents the relative target specificity of a mAb to its intended target. A mAb is considered to specific to its intended target, if the mAb has an S-score of at least 2.5. For example, if a mAb binds to protein X with a Z-score of 43 and to protein Y with a Z-score of 14, then the S-score for the binding of that mAb to protein X is equal to 29.



SDS-PAGE analysis of purified, BSA-free CREB3L4 antibody (clone PCRP-CREB3L4-1A3) as confirmation of integrity and purity.

Description

CREB3L4 is a transcriptional activator that may play a role in the unfolded protein response.

Application Notes

Optimal dilution of the CREB3L4 antibody should be determined by the researcher.

Immunogen

A recombinant partial protein sequence (within amino acids 1-298) from the human protein was used as the immunogen for the CREB3L4 antibody.

Storage

Aliquot the CREB3L4 antibody and store frozen at -20°C or colder. Avoid repeated freeze-thaw cycles.

