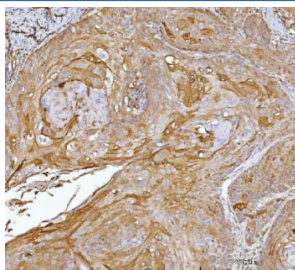


CRABP2 Antibody / Cellular retinoic acid-binding protein 2 (RQ7161)

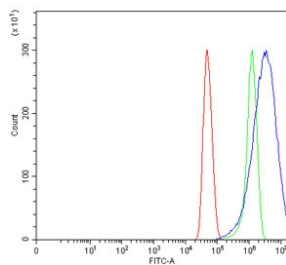
Catalog No.	Formulation	Size
RQ7161	0.5mg/ml if reconstituted with 0.2ml sterile DI water	100 ug

Bulk quote request

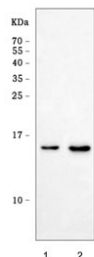
Availability	1-3 business days
Species Reactivity	Human
Format	Antigen affinity purified
Clonality	Polyclonal (rabbit origin)
Isotype	Rabbit IgG
Purity	Antigen affinity purified
Buffer	Lyophilized from 1X PBS with 2% Trehalose
UniProt	P29373
Localization	Cytoplasmic, nuclear
Applications	Western Blot : 0.5-1ug/ml Immunohistochemistry (FFPE) : 2-5ug/ml Flow Cytometry : 1-3ug/million cells Direct ELISA : 0.1-0.5ug/ml
Limitations	This CRABP2 antibody is available for research use only.



IHC staining of FFPE human laryngeal squamous cell carcinoma tissue with CRABP2 antibody. HIER: boil tissue sections in pH8 EDTA for 20 min and allow to cool before testing.



Flow cytometry testing of human U-251 cells with CRABP2 antibody at 1ug/million cells (blocked with goat sera); Red=cells alone, Green=isotype control, Blue= CRABP2 antibody.



Western blot testing of human 1) MCF-7 and 2) T-47D cell lysate with CRABP2 antibody. Predicted molecular weight ~16 kDa.

Description

Cellular retinoic acid-binding protein 2 is a cytoplasmic binding protein that in humans is encoded by the CRABP2 gene. This gene encodes a member of the retinoic acid (RA, a form of vitamin A) binding protein family and lipocalin/cytosolic fatty-acid binding protein family. The protein is a cytosol-to-nuclear shuttling protein, which facilitates RA binding to its cognate receptor complex and transfer to the nucleus. It is involved in the retinoid signaling pathway, and is associated with increased circulating low-density lipoprotein cholesterol. Alternatively spliced transcript variants encoding the same protein have been found for this gene.

Application Notes

Optimal dilution of the CRABP2 antibody should be determined by the researcher.

Immunogen

Recombinant human protein (amino acids R60-D117) was used as the immunogen for the CRABP2 antibody.

Storage

After reconstitution, the CRABP2 antibody can be stored for up to one month at 4oC. For long-term, aliquot and store at -20oC. Avoid repeated freezing and thawing.