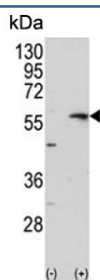


## Collagenase 3 Antibody / MMP13 (F54843)

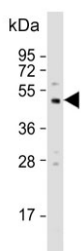
Catalog No.	Formulation	Size
F54843-0.4ML	In 1X PBS, pH 7.4, with 0.09% sodium azide	0.4 ml
F54843-0.08ML	In 1X PBS, pH 7.4, with 0.09% sodium azide	0.08 ml

**Bulk quote request**

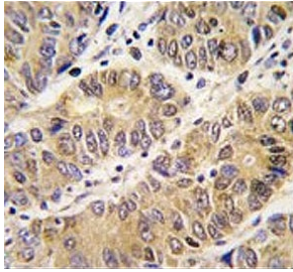
<b>Availability</b>	1-3 business days
<b>Species Reactivity</b>	Human
<b>Format</b>	Purified
<b>Clonality</b>	Polyclonal (rabbit origin)
<b>Isotype</b>	Rabbit Ig
<b>Purity</b>	Purified
<b>UniProt</b>	P45452
<b>Applications</b>	Immunohistochemistry (FFPE) : 1:50-1:100 Western Blot : 1:500-1:1000
<b>Limitations</b>	This Collagenase 3 antibody is available for research use only.



Western blot testing of 1) non-transfected and 2) transfected 293 cell lysate with Collagenase 3 antibody.



Western blot testing of human MBA-MD-231 cell lysate with Collagenase 3 antibody. Predicted molecular weight ~54 kDa.



IHC testing of FFPE human hepatocellular carcinoma tissue with Collagenase 3 antibody. HIER: steam section in pH6 citrate buffer for 20 min and allow to cool prior to staining.

## Description

Proteins of the matrix metalloproteinase (MMP) family are involved in the breakdown of extracellular matrix in normal physiological processes, such as embryonic development, reproduction, and tissue remodeling, as well as in disease processes, such as arthritis and metastasis. Most MMPs are secreted as inactive proproteins which are activated when cleaved by extracellular proteinases. The protein encoded by this gene cleaves type II collagen more efficiently than types I and III. It may be involved in articular cartilage turnover and cartilage pathophysiology associated with osteoarthritis. The gene is part of a cluster of MMP genes which localize to chromosome 11q22.3.

## Application Notes

The stated application concentrations are suggested starting points. Titration of the Collagenase 3 antibody may be required due to differences in protocols and secondary/substrate sensitivity.

## Immunogen

A portion of amino acids 295-324 from the human protein was used as the immunogen for the Collagenase 3 antibody.

## Storage

Aliquot the Collagenase 3 antibody and store frozen at -20oC or colder. Avoid repeated freeze-thaw cycles.