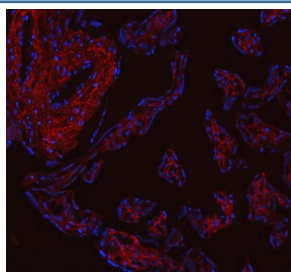


Collagen 1 Antibody / COL1A1 (R31258)

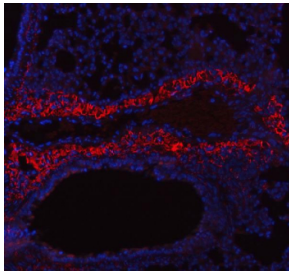
Catalog No.	Formulation	Size
R31258	0.5mg/ml if reconstituted with 0.2ml sterile DI water	100 ug

Bulk quote request

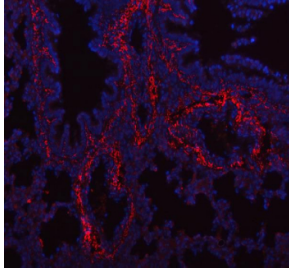
Availability	1-3 business days
Species Reactivity	Human, Mouse, Rat
Format	Antigen affinity purified
Clonality	Polyclonal (rabbit origin)
Isotype	Rabbit IgG
Purity	Antigen affinity
Buffer	Lyophilized from 1X PBS with 2% Trehalose
UniProt	P02452
Localization	Cytoplasmic
Applications	Western Blot : 0.5-1ug/ml Immunohistochemistry (FFPE) : 2-5ug/ml Immunocytochemistry (FFPE) : 1-2ug/ml Immunofluorescence (FFPE) : 5ug/ml
Limitations	This Collagen 1 antibody is available for research use only.



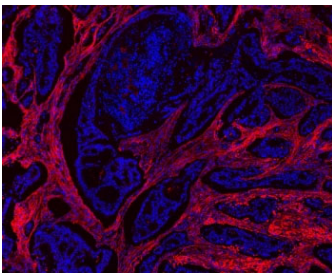
Immunofluorescent staining of FFPE human placental tissue with Collagen 1 antibody (red) and DAPI counterstain (blue). HIER: boil tissue sections in pH8 EDTA buffer, for 10-20 min and allow to cool before testing.



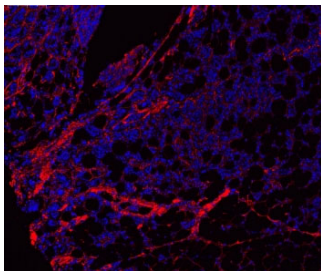
Immunofluorescent staining of FFPE mouse lung tissue with Collagen 1 antibody (red) and DAPI counterstain (blue). HIER: boil tissue sections in pH8 EDTA buffer, for 10-20 min and allow to cool before testing.



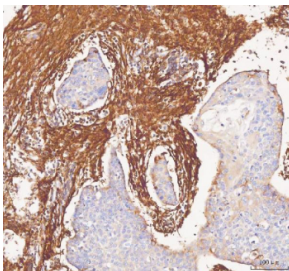
Immunofluorescent staining of FFPE rat lung tissue with Collagen 1 antibody (red) and DAPI counterstain (blue). HIER: boil tissue sections in pH8 EDTA buffer, for 10-20 min and allow to cool before testing.



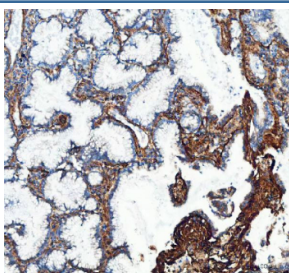
Immunofluorescent staining of FFPE human breast tissue with Collagen 1 antibody (red) and DAPI counterstain (blue). HIER: boil tissue sections in pH6 citrate buffer for 10-20 min and allow to cool before testing.



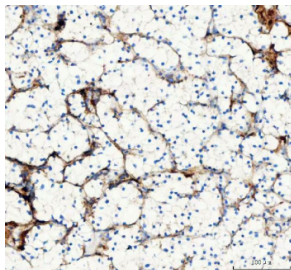
Immunofluorescent staining of FFPE human tonsil tissue with Collagen 1 antibody (red) and DAPI counterstain (blue). HIER: boil tissue sections in pH6 citrate buffer for 10-20 min and allow to cool before testing.



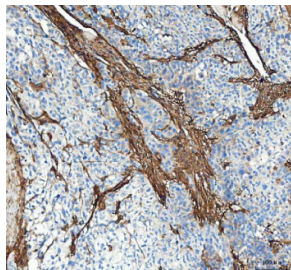
IHC staining of FFPE human liver cancer tissue with Collagen 1 antibody, HRP secondary and DAB substrate. HIER: boil tissue sections in pH8 EDTA for 20 min and allow to cool before testing.



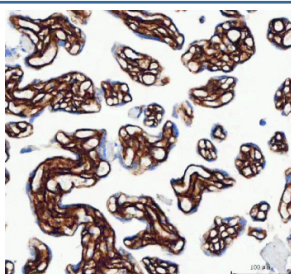
IHC staining of FFPE human lung adenocarcinoma tissue with Collagen 1 antibody, HRP secondary and DAB substrate. HIER: boil tissue sections in pH8 EDTA for 20 min and allow to cool before testing.



IHC staining of FFPE human renal cell carcinoma tissue with Collagen 1 antibody, HRP secondary and DAB substrate. HIER: boil tissue sections in pH8 EDTA for 20 min and allow to cool before testing.



IHC staining of FFPE human bladder urothelial carcinoma tissue with Collagen 1 antibody, HRP secondary and DAB substrate. HIER: boil tissue sections in pH8 EDTA for 20 min and allow to cool before testing.



IHC staining of FFPE human placental tissue with Collagen 1 antibody, HRP secondary and DAB substrate. HIER: boil tissue sections in pH8 EDTA for 20 min and allow to cool before testing.

Description

Collagen type 1 alpha 1, also known as COL1A1, is a human gene that encodes the major component of type 1 collagen, the fibrillar collagen found in most connective tissues, including cartilage. This gene is mapped to 17q21.33. This gene encodes the pro-alpha1 chains of type 1 collagen whose triple helix comprises two alpha1 chains and one alpha2 chain. Collagen type 1 is fibril-forming and found in most connective tissues and is abundant in bone, cornea, dermis and tendon. Mutations in this gene are associated with osteogenesis imperfecta types I-IV, Ehlers-Danlos syndrome type VIIA, Ehlers-Danlos syndrome Classical type, Caffey Disease and idiopathic osteoporosis.

Application Notes

The stated application concentrations are suggested starting amounts. Titration of the Collagen 1 antibody may be required due to differences in protocols and secondary/substrate sensitivity.

Immunogen

An amino acid sequence from the C-terminus of mouse COL1A1 (QPPQEKSQDGGGRYYRA) was used as the immunogen for this Collagen 1 antibody (100% rat homology).

Storage

After reconstitution, the Collagen 1 antibody can be stored for up to one month at 4°C. For long-term, aliquot and store at -20°C. Avoid repeated freezing and thawing.

