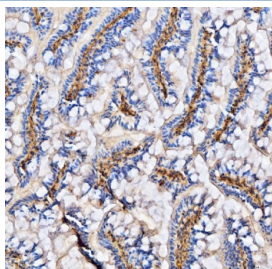


## Col6a2 Antibody / Collagen VI (RQ7684)

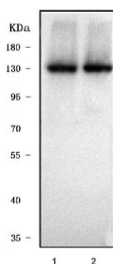
Catalog No.	Formulation	Size
RQ7684	0.5mg/ml if reconstituted with 0.2ml sterile DI water	100 ug

**Bulk quote request**

<b>Availability</b>	1-3 business days
<b>Species Reactivity</b>	Zebrafish
<b>Format</b>	Antigen affinity purified
<b>Clonality</b>	Polyclonal (rabbit origin)
<b>Isotype</b>	Rabbit IgG
<b>Purity</b>	Antigen affinity purified
<b>Buffer</b>	Lyophilized from 1X PBS with 2% Trehalose
<b>UniProt</b>	E7FCV8
<b>Applications</b>	Western Blot : 0.5-1ug/ml Immunohistochemistry (FFPE) : 2-5ug/ml Direct ELISA : 0.1-0.5ug/ml
<b>Limitations</b>	This Col6a2 antibody is available for research use only.



IHC staining of FFPE zebrafish tissue with Col6a2 antibody. HIER: boil tissue sections in pH8 EDTA for 20 min and allow to cool before testing.



Western blot testing of zebrafish lysate (lanes 1 & 2) with Col6a2 cell lysate. Predicted molecular weight ~140 kDa.

## Description

Collagen alpha-2(VI) chain is a protein that in humans is encoded by the COL6A2 gene. Acts upstream of or within axonogenesis; muscle cell development; and muscle organ development. Predicted to be active in collagen-containing extracellular matrix and extracellular space. Is expressed in several structures, including anterior segment eye; gut; integument; musculature system; and yolk syncytial layer. Human ortholog(s) of this gene implicated in Ullrich congenital muscular dystrophy. Orthologous to human COL6A2 (collagen type VI alpha 2 chain).

## Application Notes

Optimal dilution of the Col6a2 antibody should be determined by the researcher.

## Immunogen

E. coli-derived recombinant zebrafish protein (amino acids D734-C1015) was used as the immunogen for the Col6a2 antibody.

## Storage

After reconstitution, the Col6a2 antibody can be stored for up to one month at 4°C. For long-term, aliquot and store at -20°C. Avoid repeated freezing and thawing.