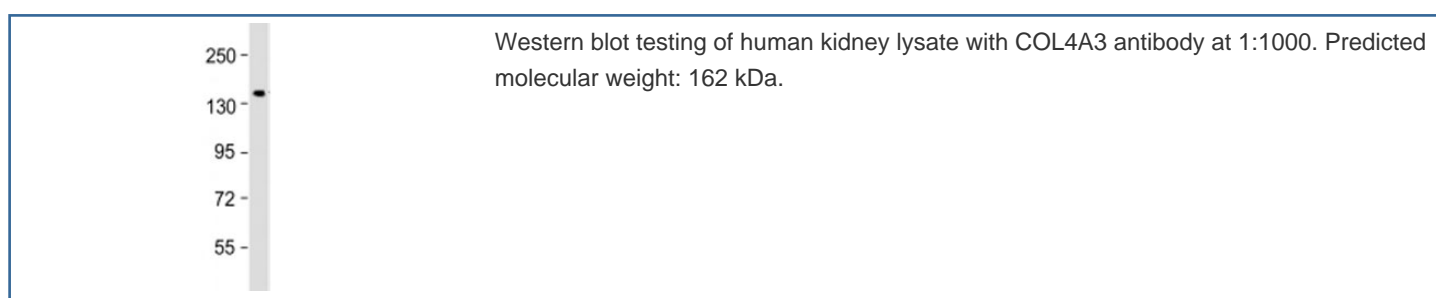


COL4A3 Antibody (F53860)

Catalog No.	Formulation	Size
F53860-0.2ML	In 1X PBS, pH 7.4, with 0.09% sodium azide	0.2 ml
F53860-0.05ML	In 1X PBS, pH 7.4, with 0.09% sodium azide	0.05 ml

[Bulk quote request](#)

Availability	1-3 business days
Species Reactivity	Human
Format	Antigen affinity purified
Clonality	Polyclonal (rabbit origin)
Isotype	Rabbit Ig
Purity	Antigen affinity
UniProt	Q01955
Applications	Western Blot : 1:500-1000
Limitations	This COL4A3 antibody is available for research use only.



Description

Type IV collagen is the major structural component of glomerular basement membranes (GBM), forming a 'chicken-wire' meshwork together with laminins, proteoglycans and entactin/nidogen.

Application Notes

Titration of the COL4A3 antibody may be required due to differences in protocols and secondary/substrate sensitivity.

Immunogen

A portion of amino acids 141-173 from the human protein was used as the immunogen for the COL4A3 antibody.

Storage

Aliquot the COL4A3 antibody and store frozen at -20oC or colder. Avoid repeated freeze-thaw cycles.