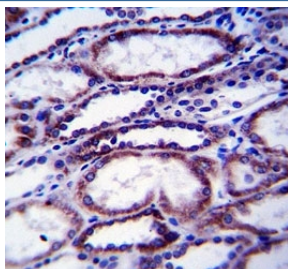


## COL1A1 Antibody (F43882)

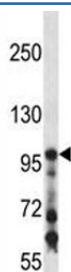
Catalog No.	Formulation	Size
F43882-0.4ML	In 1X PBS, pH 7.4, with 0.09% sodium azide	0.4 ml
F43882-0.08ML	In 1X PBS, pH 7.4, with 0.09% sodium azide	0.08 ml

[Bulk quote request](#)

<b>Availability</b>	1-3 business days
<b>Species Reactivity</b>	Human, Mouse
<b>Predicted Reactivity</b>	Bovine, Chicken, Rat
<b>Format</b>	Antigen affinity purified
<b>Clonality</b>	Polyclonal (rabbit origin)
<b>Isotype</b>	Rabbit Ig
<b>Purity</b>	Antigen affinity
<b>UniProt</b>	P02452
<b>Localization</b>	Cytoplasmic
<b>Applications</b>	Western Blot : 1:1000 IHC (Paraffin) : 1:10-1:50
<b>Limitations</b>	This COL1A1 antibody is available for research use only.



COL1A1 antibody immunohistochemistry analysis in formalin fixed and paraffin embedded human kidney tissue.



COL1A1 antibody western blot analysis in mouse kidney tissue lysate. Expected molecular weight: 140-210 kDa (precursor), 70-90 kDa (mature).

## Description

This gene encodes the pro-alpha1 chains of type I collagen whose triple helix comprises two alpha1 chains and one alpha2 chain. Type I is a fibril-forming collagen found in most connective tissues and is abundant in bone, cornea, dermis and tendon. Mutations in this gene are associated with osteogenesis imperfecta types I-IV, Ehlers-Danlos syndrome type VIIA, Ehlers-Danlos syndrome Classical type, Caffey Disease and idiopathic osteoporosis. Reciprocal translocations between chromosomes 17 and 22, where this gene and the gene for platelet-derived growth factor beta are located, are associated with a particular type of skin tumor called dermatofibrosarcoma protuberans, resulting from unregulated expression of the growth factor. Two transcripts, resulting from the use of alternate polyadenylation signals, have been identified for this gene. [provided by R. Dalgleish].

## Application Notes

Titration of the COL1A1 antibody may be required due to differences in protocols and secondary/substrate sensitivity.

## Immunogen

A portion of amino acids 1077-1106 from the human protein was used as the immunogen for this COL1A1 antibody.

## Storage

Aliquot the COL1A1 antibody and store frozen at -20oC or colder. Avoid repeated freeze-thaw cycles.