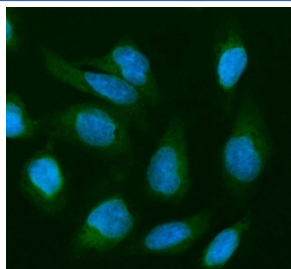


## Cofilin 2 Antibody / CFL2 (R32400)

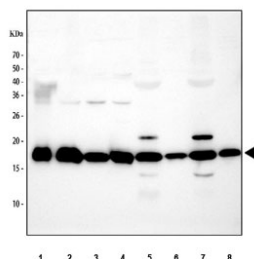
Catalog No.	Formulation	Size
R32400	0.5mg/ml if reconstituted with 0.2ml sterile DI water	100 ug

**Bulk quote request**

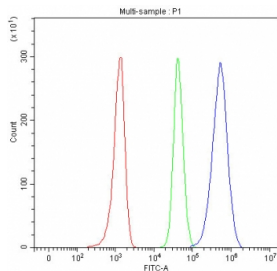
<b>Availability</b>	1-3 business days
<b>Species Reactivity</b>	Human, Mouse, Rat
<b>Format</b>	Antigen affinity purified
<b>Clonality</b>	Polyclonal (rabbit origin)
<b>Isotype</b>	Rabbit IgG
<b>Purity</b>	Antigen affinity
<b>Buffer</b>	Lyophilized from 1X PBS with 2% Trehalose
<b>UniProt</b>	Q9Y281
<b>Localization</b>	Cytoplasmic
<b>Applications</b>	Western Blot : 0.5-1ug/ml Immunofluorescence : 5ug/m Flow Cytometry : 1-3ug/million cells
<b>Limitations</b>	This Cofilin 2 antibody is available for research use only.



Immunofluorescent staining of FFPE human U-2 OS cells with Cofilin 2 antibody (green) and DAPI nuclear stain (blue). HIER: steam section in pH6 citrate buffer for 20 min.



Western blot testing of 1) human Raji, 2) HUVEC, 3) human HepG2, 4) human HeLa, 5) rat skeletal muscle, 6) rat liver, 7) mouse skeletal muscle and 8) mouse liver tissue lysate with Cofilin 2 antibody. Predicted molecular weight: ~19 kDa.



Flow cytometry testing of fixed and permeabilized human Raji cells with Cofilin 2 antibody at 1ug/million cells (blocked with goat sera); Red=cells alone, Green=isotype control, Blue= Cofilin 2 antibody.

## Description

Cofilin 2 (muscle), also known as CFL2, is a protein which in humans is encoded by the CFL2 gene. It is mapped to 14q12. This gene encodes an intracellular protein that is involved in the regulation of actin-filament dynamics. And this protein is a major component of intranuclear and cytoplasmic actin rods. It can bind G- and F-actin in a 1:1 ratio of cofilin to actin, and it reversibly controls actin polymerization and depolymerization in a pH-dependent manner. Mutations in this gene cause nemaline myopathy type 7, a form of congenital myopathy. Alternative splicing results in multiple transcript variants.

## Application Notes

Optimal dilution of the Cofilin 2 antibody should be determined by the researcher.

## Immunogen

Amino acids KDAIKKKFTGIKHEWQVNGLDLDDIKDRSTLGEKL were used as the immunogen for the Cofilin 2 antibody.

## Storage

After reconstitution, the Cofilin 2 antibody can be stored for up to one month at 4oC. For long-term, aliquot and store at -20oC. Avoid repeated freezing and thawing.